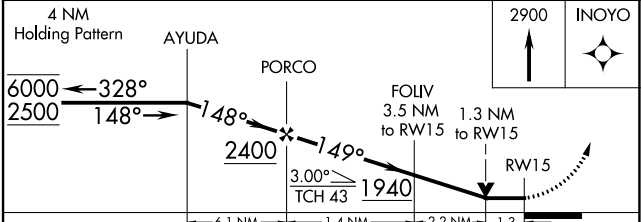
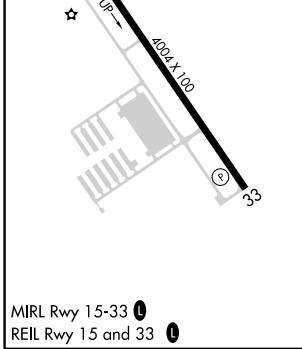
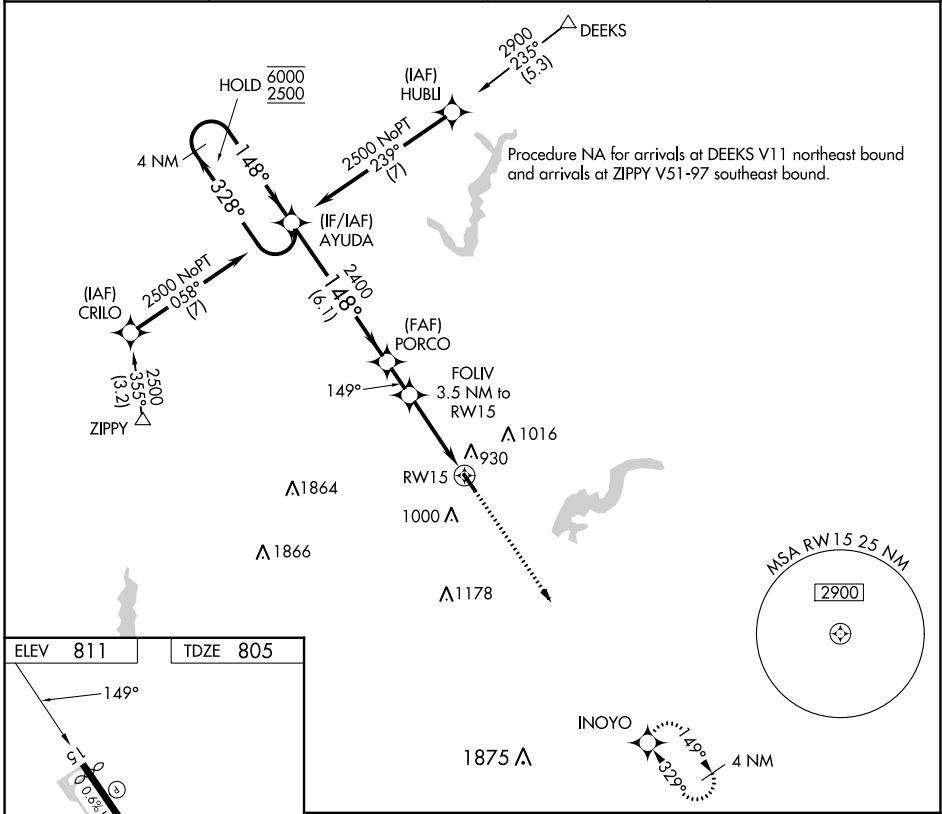


|             |          |             |
|-------------|----------|-------------|
| APP CRS     | Rwy Idg  | <b>3848</b> |
| <b>149°</b> | TDZE     | <b>805</b>  |
|             | Apt Elev | <b>811</b>  |

# RNAV (GPS) RWY 15

INDIANAPOLIS METRO (UMP)

|  |   |  |                                 |
|--|---|--|---------------------------------|
| RNP APCH - GPS.  |   | MISSED APPROACH:<br>Climb to 2900 direct INOYO and hold. |                                 |
| <p><b>▼</b> Helicopter visibility reduction below 3/4 SM NA. VDP NA when using Indianapolis Intl altimeter setting. When local altimeter setting not received, use Indianapolis Intl altimeter setting and increase all MDA 60 feet and LNAV Cat C visibility 1/4 SM.</p> <p><b>▲</b> NA</p> |   |  |                                 |
| AWOS-3PT<br><b>119.375</b>   | INDIANAPOLIS APP CON<br><b>127.15 317.8</b> | CLNC DEL<br><b>121.625</b>                               | UNICOM<br><b>123.0 (CTAF) 0</b> |



| CATEGORY          | A                     | B                     | C                         | D  |
|-------------------|-----------------------|-----------------------|---------------------------|----|
| LNAV MDA          | 1240-1                | 435 (500-1)           | 1240-1/4<br>435 (500-1/4) | NA |
| <b>C</b> CIRCLING | 1320-1<br>509 (600-1) | 1340-1<br>529 (600-1) | 1340-1/2<br>529 (600-1/2) | NA |

EC-2, 05 SEP 2024 to 03 OCT 2024

EC-2, 05 SEP 2024 to 03 OCT 2024