

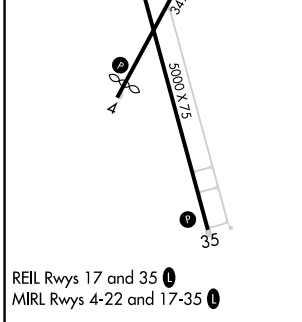
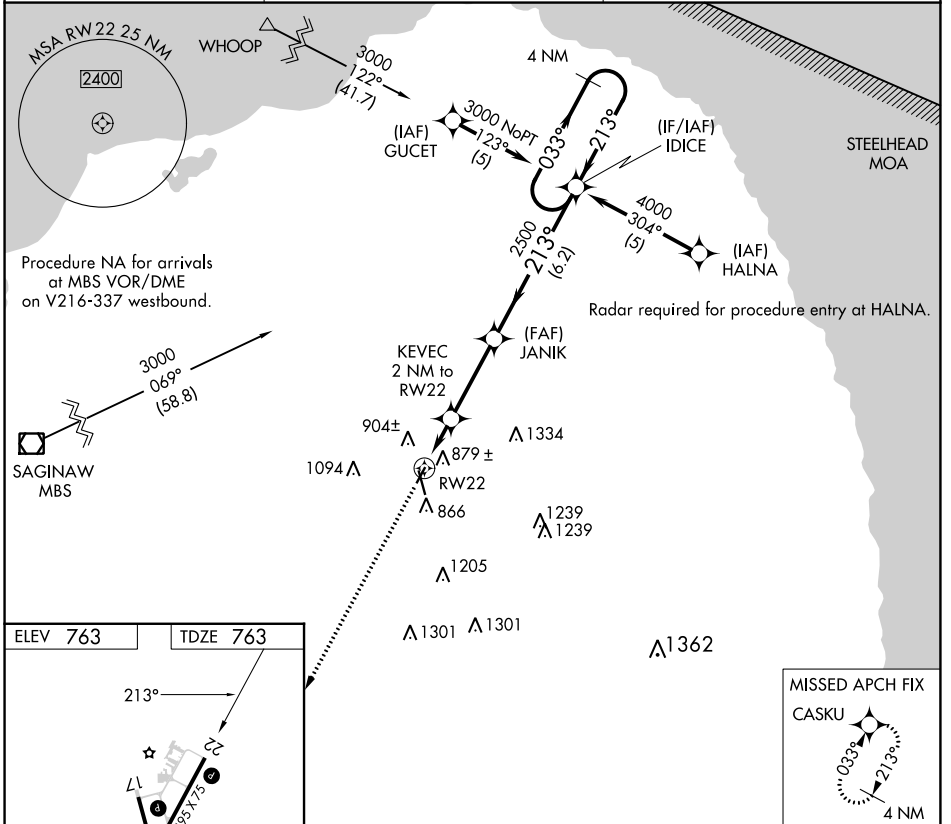
| | | |
|-------------|----------|-------------|
| APP CRS | Rwy Idg | 3495 |
| 213° | TDZE | 763 |
| | Apt Elev | 763 |

RNAV (GPS) RWY 22

HURON COUNTY MEML (BAX)

| | |
|---|---|
| RNP APCH. | MISSED APPROACH: Climb to 3000 direct CASKU and hold. |
| <p>▼ When local altimeter setting not received, use MBS Intl altimeter setting and increase all MDA 140 feet; increase LNAV Cat C visibility ½ SM. Procedure NA at night. Rwy 22 helicopter visibility reduction below 1 SM NA.</p> | |

| | | |
|------------------------|--|-----------------------------------|
| AWOS-3 118.6 | CLEVELAND CENTER 127.7 290.425 | UNICOM 123.075 (CTAF) 0 |
|------------------------|--|-----------------------------------|



| | | | | |
|----------|--------|-----------------------------|--------|----------------------|
| 3000 | CASKU | Visual Segment - Obstacles. | IDICE | 4 NM Holding Pattern |
| | | JANIK | | |
| | | KEVEC 2 NM to RW22 | | |
| | | RW22 | | |
| | | 1440 | 2500 | 3000 |
| | | 2 NM | 3.3 NM | 6.2 NM |
| CATEGORY | A | B | C | D |
| LNAV MDA | 1140-1 | 377 (400-1) | | NA |

EC-1, 05 SEP 2024 to 03 OCT 2024

EC-1, 05 SEP 2024 to 03 OCT 2024