

GABOW TWO DEPARTURE (RNAV)

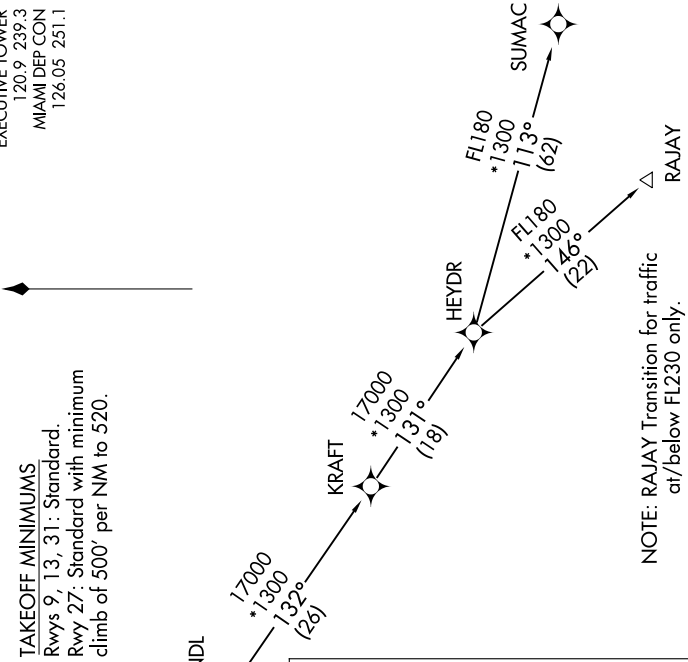
SE-3, 05 SEP 2024 to 03 OCT 2024

- ATIS 119.85
- CINCDEL 127.95
- GND CON 121.75
- EXECUTIVE TOWER 120.9 239.3
- MIAMI DEP CON 126.05 251.1



TAKEOFF MINIMUMS
 Rwys 9, 13, 31: Standard.
 Rwy 27: Standard with minimum
 climb of 500' per NM to 520.

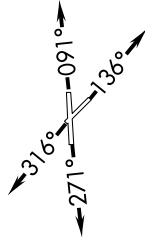
RNAV 1 - DME/DME/IRU or GPS.
 From KRAFT - GPS.
 RADAR required.



NOTE: RAJAY Transition for traffic
 at/below FL230 only.

NOTE: Chart not to scale.

**TOP ALTITUDE:
 ASSIGNED BY ATC**



DEPARTURE ROUTE DESCRIPTION

TAKEOFF RUNWAY 9: Climb on heading 091° or as assigned by ATC for vectors to cross MNUDO at or above 4000, thence. . . .

TAKEOFF RUNWAY 13: Climb on heading 136° or as assigned by ATC for vectors to cross MNUDO at or above 4000, thence. . . .

TAKEOFF RUNWAY 27: Climb on heading 271° or as assigned by ATC for vectors to cross MNUDO at or above 4000, thence. . . .

TAKEOFF RUNWAY 31: Climb on heading 316° or as assigned by ATC for vectors to cross MNUDO at or above 4000, thence. . . .

. . . . on track 122° to GABOW, (transition). Maintain ATC assigned altitude. Expect clearance to filed altitude ten minutes after departure.

RAJAY TRANSITION (GABOW2.RAJAY)
SANDL TRANSITION (GABOW2.SANDL)
SUMAC TRANSITION (GABOW2.SUMAC)

SE-3, 05 SEP 2024 to 03 OCT 2024