

WAAS CH 50319 W27A	APP CRS 271°	Rwy Idg TDZE 13 Apt Elev 13	6002
--	------------------------	---	-------------

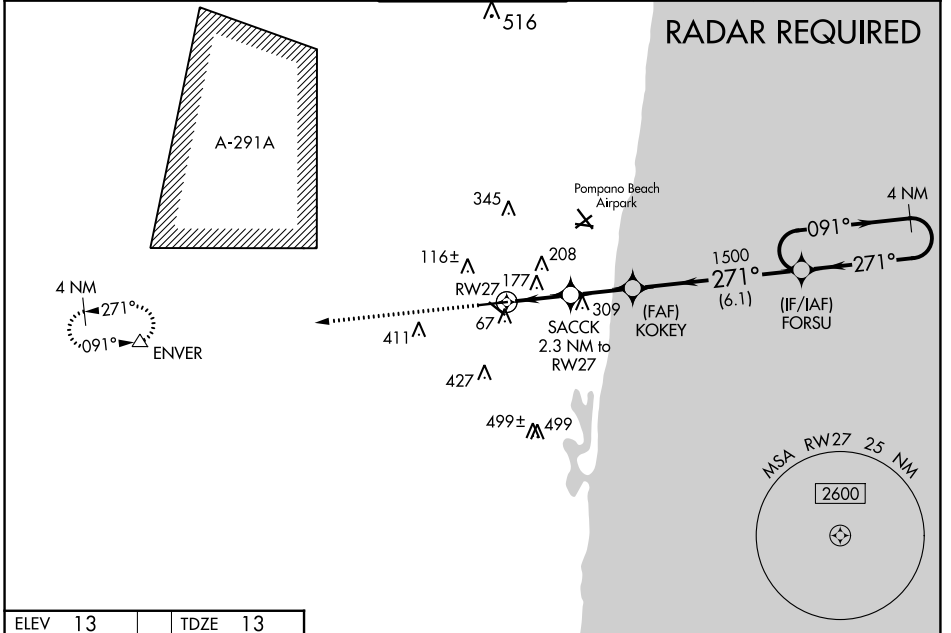
RNAV (GPS) RWY 27

FORT LAUDERDALE EXEC (FXXE)

⚠ For uncompensated Baro-VNAV systems, LNAV/VNAV NA below 4°C (40°F) or above 54°C (130°F).
⚠ DME/DME RNP-0.3 NA. When local altimeter setting not received, use Fort Lauderdale/Hollywood Intl altimeter setting and increase LPV DA to 414; LNAV/VNAV DA to 468. Increase all MDA 20 feet and increase LPV all Cats and LNAV Cats C/D visibility to 1/2. Baro-VNAV and VDP NA when using Fort Lauderdale/Hollywood Intl altimeter setting. Helicopter visibility reduction below 3/4 SM NA.

MISSED APPROACH: Climb to 2000 direct ENVER and hold.

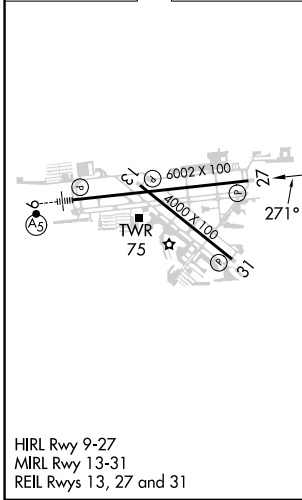
ATIS 119.85	MIAMI APP CON 119.7 306.3	EXECUTIVE TOWER 120.9 239.3	GND CON 121.75	CLNC DEL 127.95
-----------------------	-------------------------------------	--	--------------------------	---------------------------



SE-3, 05 SEP 2024 to 03 OCT 2024

SE-3, 05 SEP 2024 to 03 OCT 2024

ELEV 13	TDZE 13
----------------	----------------



2000	ENVER	VGSi and RNAV glidepath not coincident (VGSi Angle 3.25/TCH 56).		4 NM Holding Pattern
↑	△			
*LNAV only		SACCK 2.3 NM to RWY27		KOKEY 1500
		*1.1 NM to RWY27		FORSU 2000
		RWY27 780*		GP 3.00° TCH 45
		1.1 1.2 NM 2.2 NM 6.1 NM		
CATEGORY	A	B	C	D
LPV DA	396-1 1/4		383 (400-1 1/4)	
LNAV/VNAV DA	450-1 1/2		437 (500-1 1/2)	
LNAV MDA	440-1 427 (500-1)		440-1 1/4 427 (500-1 1/4)	
C CIRCLING	520-1 507 (600-1)	620-1 607 (700-1)	780-2 1/4 767 (800-2 1/4)	780-2 1/2 767 (800-2 1/2)