

WAAS CH <b>56607</b> <b>W34A</b>	APP CRS <b>338°</b>	Rwy Idg TDZE Apt Elev	<b>5001</b> <b>1069</b> <b>1069</b>
--	------------------------	-----------------------------	---

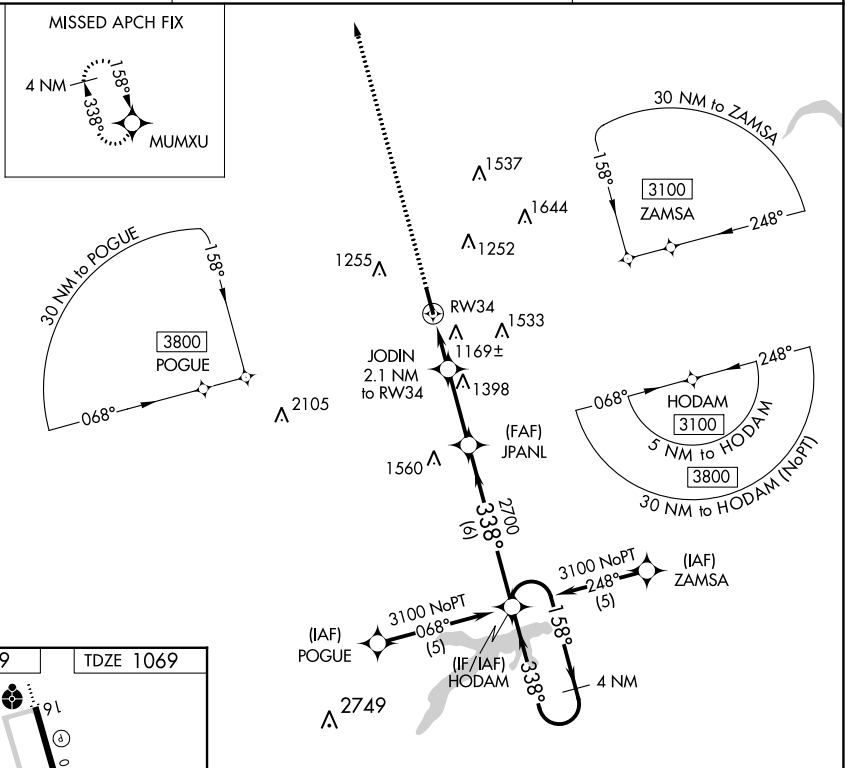
# RNAV (GPS) RWY 34

GUTHRIE/EDMOND RGNL (GOK)

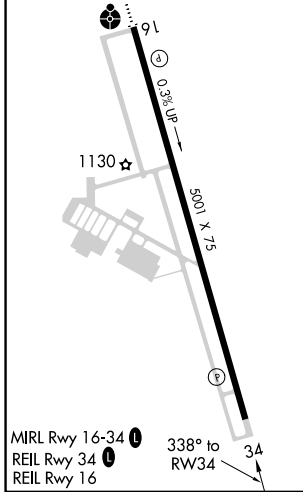
**▽** DME/DME RNP-0.3 NA. VDP NA when using Will Rogers World altimeter setting. When local altimeter setting not received, use Will Rogers World altimeter setting and increase DA/MDA 100 feet and LPV all Cats visibility ¼ mile.

**▲** MISSED APPROACH: Climb to 3100 direct MUMXU and hold.

ASOS <b>133.975</b>	OKE CITY APP CON <b>124.2 336.4</b>	UNICOM <b>122.8</b> (CTAF) <b>①</b>
------------------------	--	--



ELEV 1069	TDZE 1069
-----------	-----------



3100	MUMXU	JODIN 2.1 NM to RW34	JPANL	HODAM	4 NM Holding Pattern
*LNAV only.		*1 NM to RW34			
		1760*	2700	3100	GP 3.00° TCH 45
	1 NM	1.1 NM	2.8 NM	6 NM	
CATEGORY	A	B	C	D	
LPV DA	1319-1	250 (300-1)		NA	
LNAV MDA	1420-1	351 (400-1)		NA	
CIRCLING	1540-1 471 (500-1)	1560-1 491 (500-1)		NA	

SC-1, 05 SEP 2024 to 03 OCT 2024

SC-1, 05 SEP 2024 to 03 OCT 2024