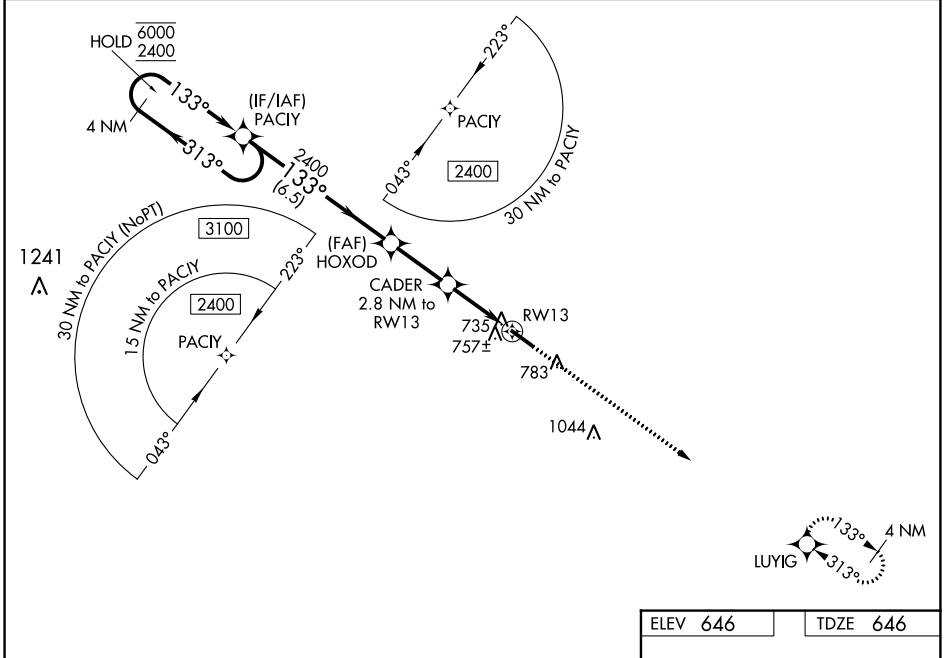


WAAS CH 62809 W13A	APP CRS 133°	Rwy Idg 5020 TDZE 646 Apt Elev 646
--	------------------------	---

RNAV (GPS) RWY 13

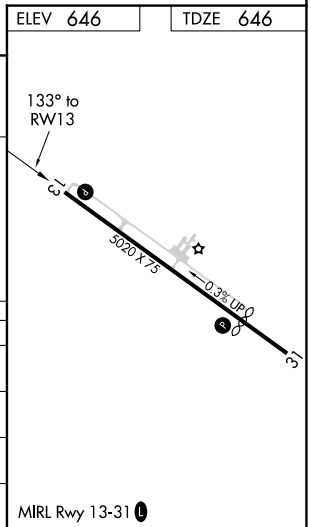
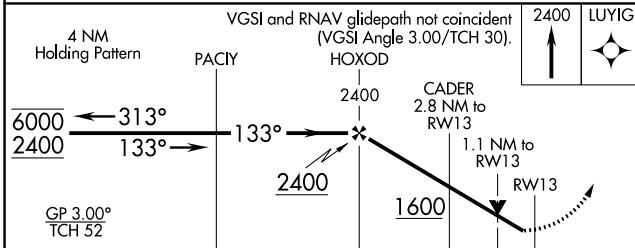
WASHINGTON/WILKES COUNTY (IIY)

RNP APCH-GPS.		MISSED APPROACH: Climb to 2400 direct LUYIG and hold.
AWOS-3 118.375	AUGUSTA APP CON* 126.8 270.3	
		UNICOM 122.7 (CTAF)



SE-4, 05 SEP 2024 to 03 OCT 2024

SE-4, 05 SEP 2024 to 03 OCT 2024



CATEGORY	A	B	C	D
LPV DA	958- ⁷ / ₈	312 (400- ⁷ / ₈)		NA
LNAV/ VNAV DA	907- ⁷ / ₈	261 (300- ⁷ / ₈)		NA
LNAV MDA	1020-1	374 (400-1)		NA
C CIRCLING	1080-1 434 (500-1)	1100-1 454 (500-1)	1100-1 ¹ / ₂ 454 (500-1 ¹ / ₂)	NA

MIRL Rwy 13-31 **1**