

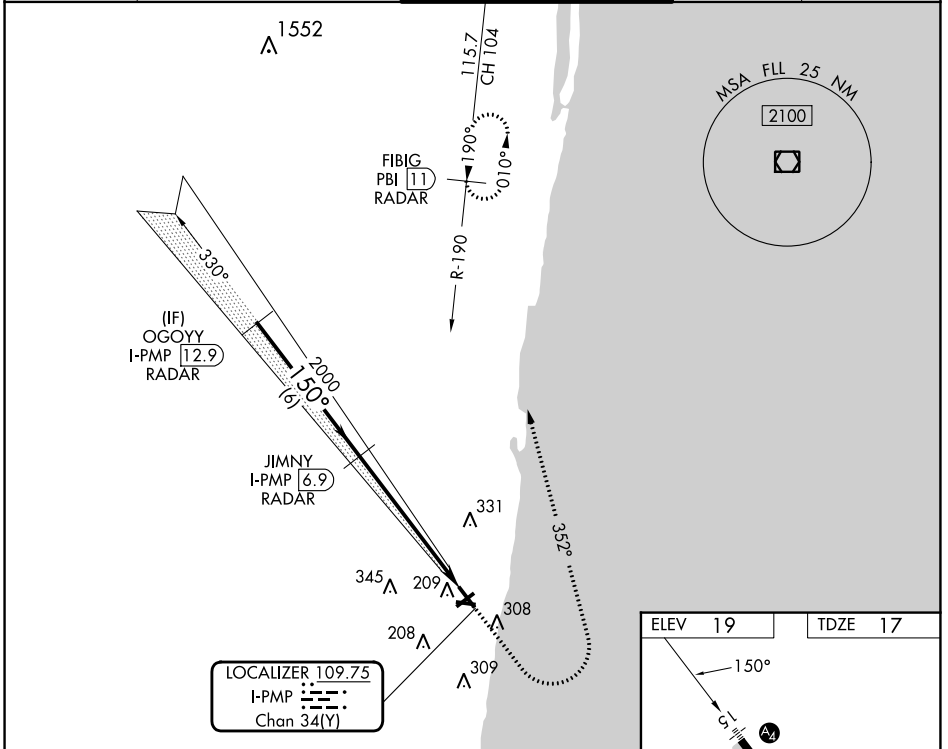
LOC/DME I-PMP <b>109.75</b> Chan <b>34(Y)</b>	APP CRS <b>150°</b>	Rwy ldg <b>4418</b> TDZE <b>17</b> Apt Elev <b>19</b>
---	------------------------	---

# LOC RWY 15

POMPANO BEACH AIRPARK (PMP)

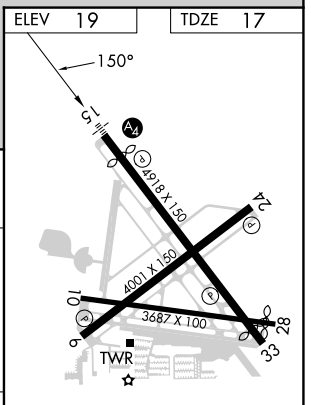
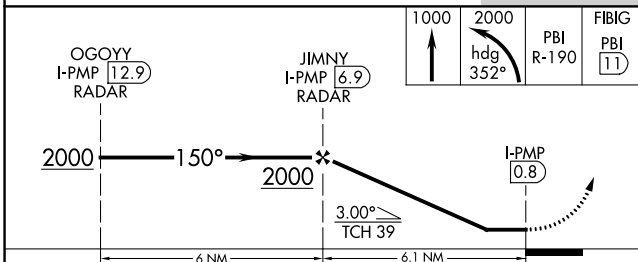
DME required. RADAR required for procedure entry.		MALS	MISSED APPROACH: Climb to 1000 then climbing left turn to 2000 on heading 352° and PBI VORTAC R-190 to FIBIG/PBI 11 DME/RADAR and hold.
<b>▽</b>	Rwy 15 helicopter visibility reduction below 1 SM NA. Inop table does not apply. Procedure NA at night.	<b>Ⓜ</b>	

ATIS <b>120.55</b>	MIAMI APP CON <b>119.7 306.3</b>	<b>POMPANO BEACH TOWER ★</b> <b>125.4 (CTAF) ①</b>	GND CON <b>121.9</b>	UNICOM <b>122.95</b>
-----------------------	-------------------------------------	---	-------------------------	-------------------------



SE-3, 05 SEP 2024 to 03 OCT 2024

SE-3, 05 SEP 2024 to 03 OCT 2024



CATEGORY	A	B	C	D
S-LOC 15	480-1	463 (500-1)		NA
<b>C</b> CIRCLING	660-1	641 (700-1)		NA

MIRL all Rwys  
REIL Rwys 6 and 24