


COPTER TACAN RWY 21

TACAN NFG Chan 55	APCH CRS 211°	Rwy ldg TDZE Arpt Elev 6005 78 78
-----------------------------	-------------------------	---

[USN]

CAMP PENDLETON MCAS (MUNN FLD) (KNFG)

⚠ * When ALS inop, increase vis to 1 mile.
Visibility reduction by Helicopters NA.

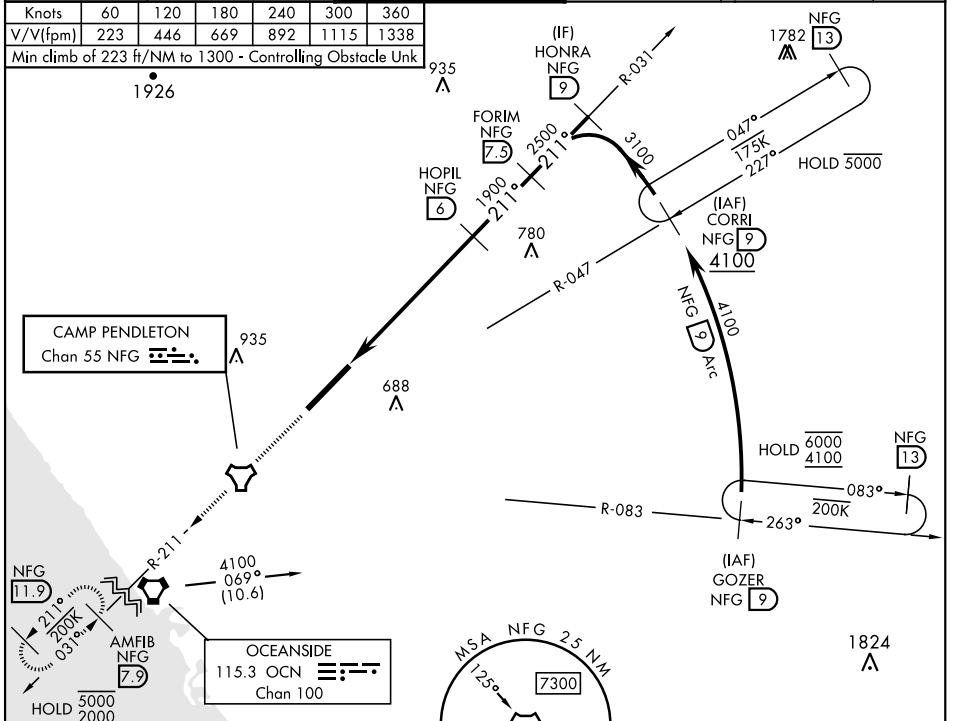
SALSF 

MISSED APPROACH: Climb to 2000 direct NFG TACAN then direct AMFIB and hold.

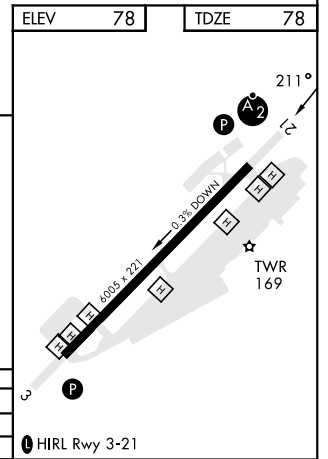
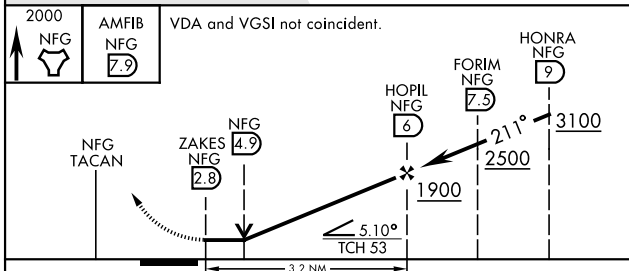
ATIS ★ 285.45	SOCAL APP CON 127.3 323.0	TOWER ★ 128.775 340.2	GND CON 134.675 360.2	CLNC DEL 134.675 271.6	ASR/ PAR
-------------------------	-------------------------------------	---------------------------------	---------------------------------	----------------------------------	-------------

Knots	60	120	180	240	300	360
V/V(fpm)	223	446	669	892	1115	1338

Min climb of 223 ft/NM to 1300 - Controlling Obstacle Unk



ELEV	78	TDZE	78
------	----	------	----



CATEGORY	COPTER	
H-21*	940- $\frac{3}{4}$	862 (900- $\frac{3}{4}$)
CIRCLING	NOT AUTHORIZED	

OCEANSIDE, CALIFORNIA 33°18'N-117°21'W CAMP PENDLETON MCAS (MUNN FLD) (KNFG)

Amdt 5 02DEC21

COPTER TACAN RWY 21

SW-3, 05 SEP 2024 to 03 OCT 2024

SW-3, 05 SEP 2024 to 03 OCT 2024