

OCEANSIDE, CALIFORNIA

RNAV (GPS) RWY 21

WAAS CH 91083 W21A	APCH CRS 211°	Rwy ldg TDZE 6005 Arprt Elev 78
-------------------------------------	----------------------	--

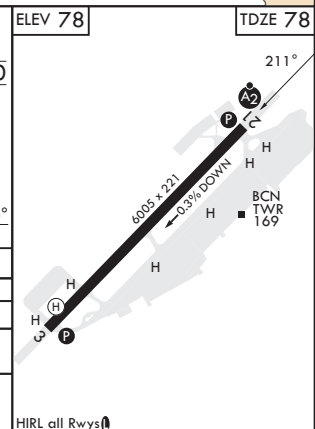
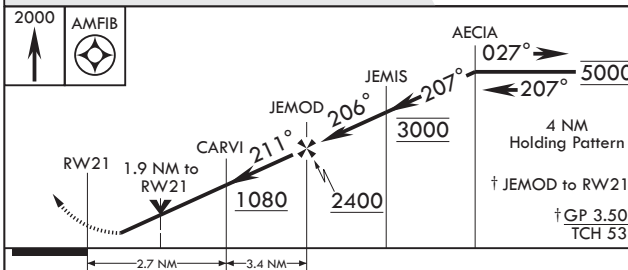
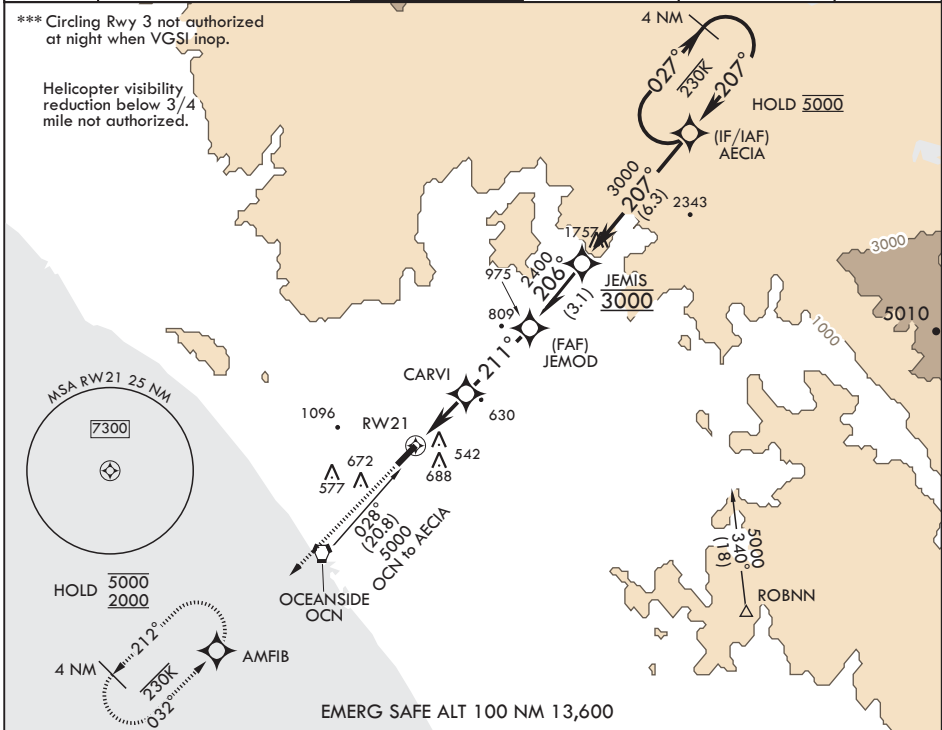
- (USN) CAMP PENDLETON MCAS (MUNN FLD) (KNFG)

RNP APCH. DME/DME RNP-0.3 N/A

▼ * When ALS inop, increase vis to 1 mile.
** When ALS inop, increase CAT A vis to 1 mile, CAT B vis to 1 1/4 miles, CAT CD vis to 2 1/2 miles.

MISSED APPROACH: Climb to 2000 direct AMFIB and hold.

ATIS★ 285.45	SOCAL APP CON/DEP CON 127.3 323.0	TOWER★ 128.775 340.2	GND CON 134.675 360.2	CLNC DEL 134.675 271.6	ASR/PAR
---------------------	--	------------------------------------	------------------------------	-------------------------------	---------



CATEGORY	A	B	C	D
LPV DA*	449-3/4 371 (400-3/4)			
LNAV MDA**	840-3/4 762 (800-3/4)	840-1 762 (800-1)	840-2	762 (800-2)
☐ CIRCLING***	1000-1 1/4 922 (1000-1 1/4)	1260-1 1/2 1182 (1200-1 1/2)	1500-3	1422 (1500-3)

OCEANSIDE, CALIFORNIA

33°18'N - 117°21'W CAMP PENDLETON MCAS (MUNN FLD) (KNFG)

Amdt 5 21APR22

RNAV (GPS) RWY 21

SW-3, 05 SEP 2024 to 03 OCT 2024

SW-3, 05 SEP 2024 to 03 OCT 2024