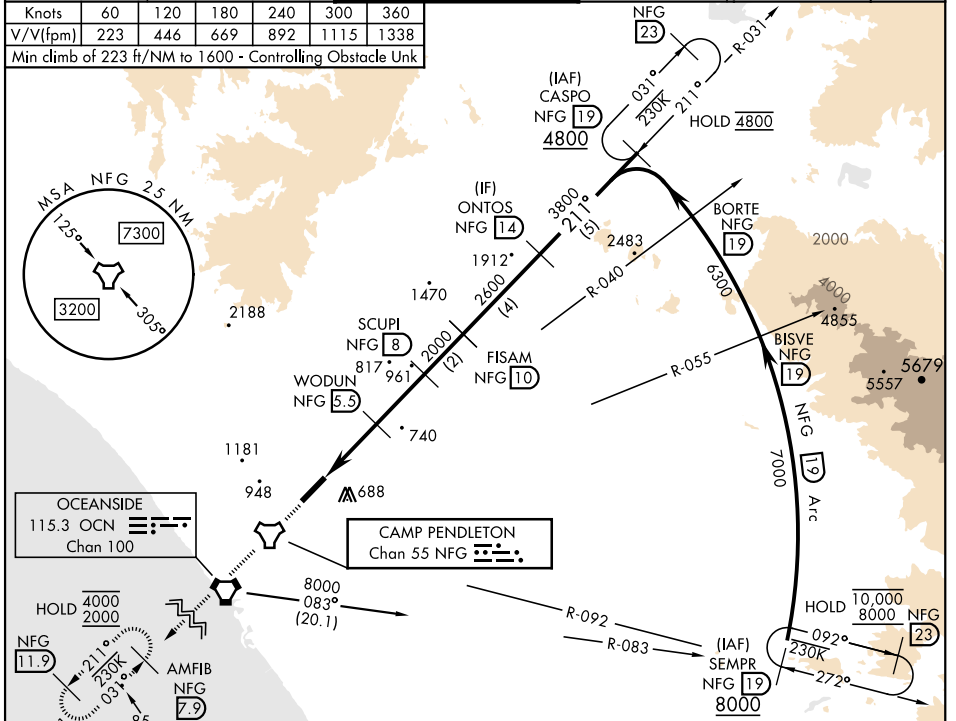


TACAN Z RWY 21

TACAN NFG Chan 55	APCH CRS 211°	Rwy Idg TDZE Arpt Elev 6005 78 78	[USN]	CAMP PENDLETON MCAS (MUNN FLD) (KNFG)
▼ * When ALS inop, increase CAT A vis to 1 mile, CAT B to 1½ miles. ** Circling Rwy 3 not authorized at night when VGSI inop. Visibility Reduction by Helicopters NA.				SALSF
MISSED APPROACH: Climb to 2000 direct NFG TACAN then direct AMFIB and hold.				

ATIS ★ 285.45	SOCAL APP CON 127.3 323.0	TOWER ★ 128.775 0 340.2	GND CON 134.675 360.2	CLNC DEL 134.675 271.6	ASR/PAR
-------------------------	-------------------------------------	-----------------------------------	---------------------------------	----------------------------------	---------

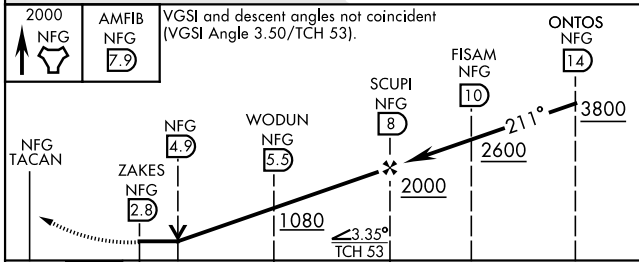
Knots	60	120	180	240	300	360
V/V(fpm)	223	446	669	892	1115	1338
Min climb of 223 ft/NM to 1600 - Controlling Obstacle Unk						



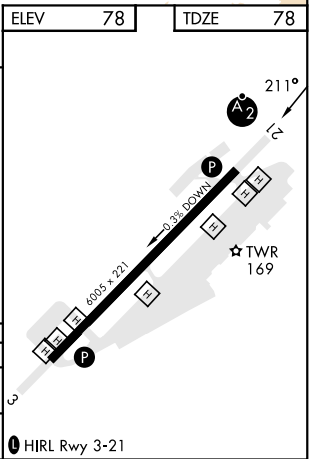
OCEANSIDE
115.3 OCN
Chan 100

CAMP PENDLETON
Chan 55 NFG

ELEV	78	TDZE	78
------	----	------	----



EMERG SAFE ALT 100 NM 13,600	2000 NFG	AMFIB NFG 7.9	VGSI and descent angles not coincident (VGSI Angle 3.50/TCH 53).		ONTOS NFG 14
CATEGORY	A	B	C	D	
S-21*	940-¾ 862 (900-¾)	940-1 862 (900-1)	940-2½	862 (900-2½)	
CIRCLING**	1000-1¼ 922 (1000-1¼)	1260-1½ 1182 (1200-1½)	1500-3	1422 (1500-3)	



TACAN Z RWY 21

SW-3, 05 SEP 2024 to 03 OCT 2024

SW-3, 05 SEP 2024 to 03 OCT 2024