

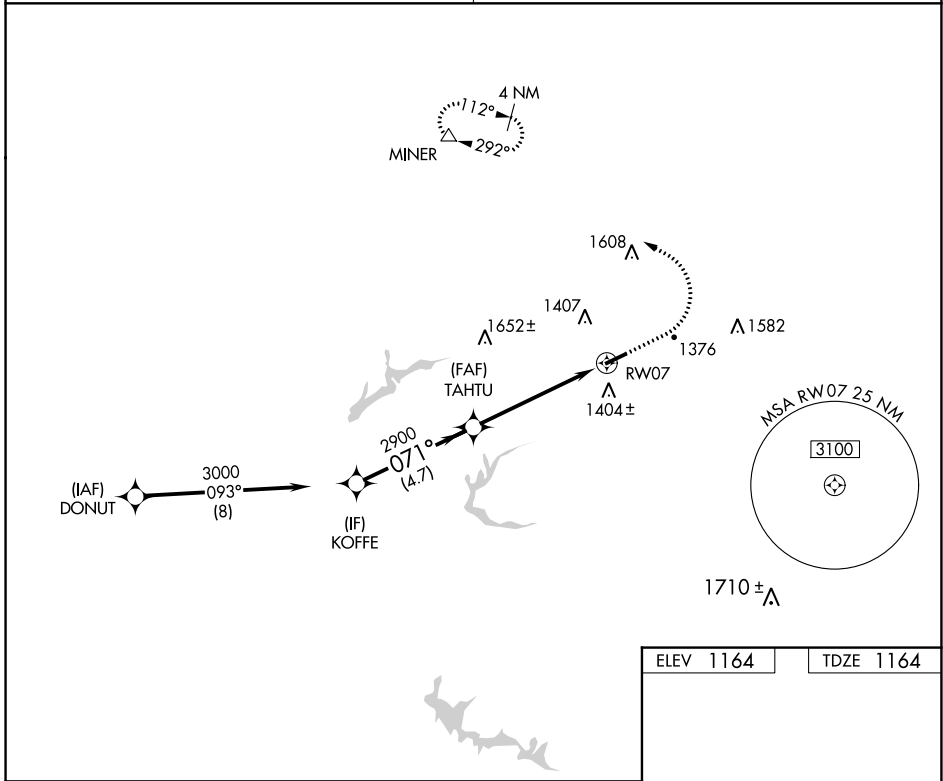
WAAS CH 62930 W07A	APP CRS 071°	Rwy Idg TDZE 1164 Apt Elev 1164	4300
--	------------------------	---	-------------

RNAV (GPS) RWY 7

CARROLL COUNTY-TOLSON (T'SO)

RNP APCH.	Procedure NA at night. Use Akron-Canton Rgnl altimeter setting; when not received use New Philadelphia altimeter and increase all MDA 20 feet. Rwy 7 helicopter visibility reduction below 1 SM NA.	MISSED APPROACH: Climb to 2000 then climbing left turn to 3000 direct MINER and hold.
-----------	---	---

CLEVELAND APP CON★ 125.5 371.875	UNICOM 122.7 (CTAF) 0
--	---------------------------------



EC-2, 05 SEP 2024 to 03 OCT 2024

EC-2, 05 SEP 2024 to 03 OCT 2024

ELEV 1164	TDZE 1164
-----------	-----------

The inset diagram shows the final approach segment from the TAHTU fix to RWY 7. The path is on a heading of 071° and descends to 2900 feet at TAHTU. From TAHTU, the path continues on 071° to RWY 7 at 1404± feet. A 4300 x 75 foot runway is shown. Obstacles are marked with circles and triangles. A REIL (Runway End Identifier Lights) for Rwy 7 and 25, and MIRL (Medium Intensity Runway Lights) for Rwy 7-25 are indicated.

		Visual Segment - Obstacles.		2000	3000	MINER
		KOFFE		↑	↘	△
		TAHTU				
		RWY 7				
		4.7 NM	5.3 NM			
CATEGORY		A	B	C	D	
LP	MDA	1760-1	596 (600-1)			NA
LNAV	MDA	1820-1	656 (700-1)			NA
	CIRCLING	1840-1	676 (700-1)			NA