

WAAS CH <b>50405</b> <b>W25A</b>	APP CRS <b>253°</b>	Rwy Idg TDZE Apt Elev	<b>5000</b> <b>891</b> <b>891</b>
--	------------------------	-----------------------------	---

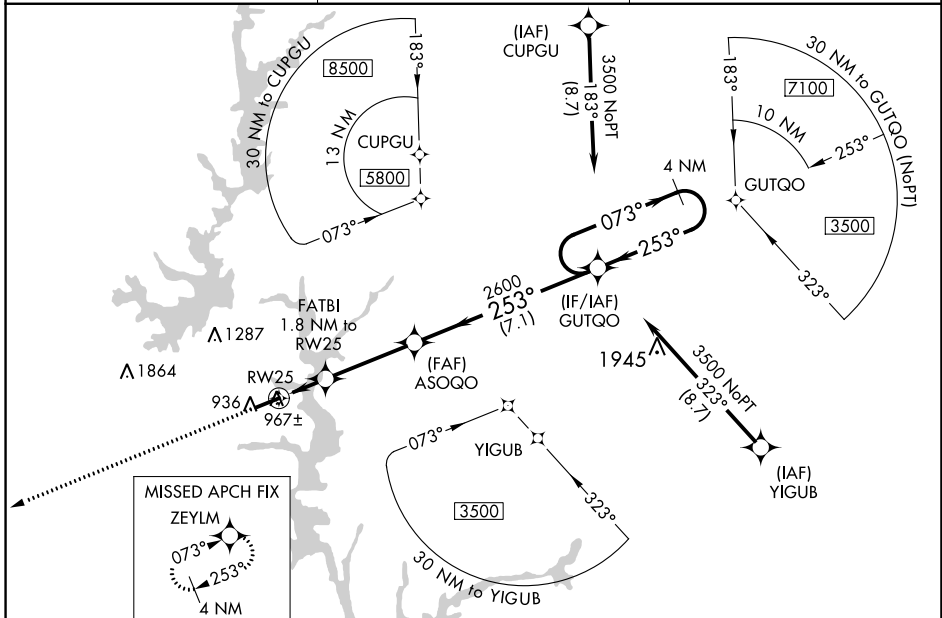
# RNAV (GPS) RWY 25

OCONEE COUNTY RGNL (CEU)

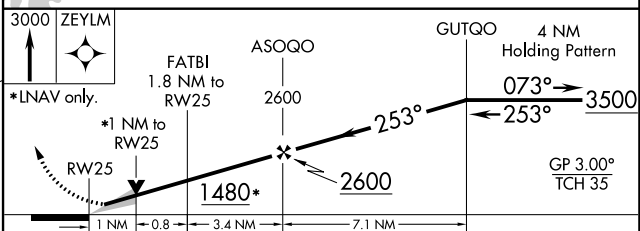
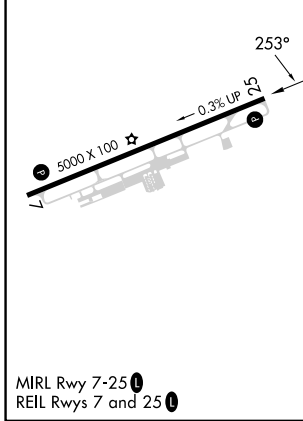
**⚠** For uncompensated Baro-VNAV systems, LNAV/VNAV NA below -6°C (22°F) or above 54°C (130°F). DME/DME RNP-0.3 NA. When local altimeter setting not received, use Anderson altimeter setting and increase all DA 47 feet and all MDA 60 feet; increase LPV all Cats, and LNAV Cat C visibility 1/8 mile; increase LNAV/VNAV all Cats visibility 1/4 mile. Baro-VNAV and VDP NA when using Anderson altimeter setting.

**MISSED APPROACH:** Climb to 3000 direct ZEYLM and hold.

ASOS <b>119.275</b>	GREER APP CON* <b>118.8 270.275</b>	UNICOM <b>122.7 (CTAF)</b> <b>📞</b>
------------------------	--	--



ELEV 891	TDZE 891
----------	----------



	A	B	C	D
LPV DA	1091-3/4	200 (200-3/4)		NA
LNAV/VNAV DA	1141-7/8	250 (300-7/8)		NA
LNAV MDA	1220-1	329 (400-1)		NA
<b>C</b> CIRCLING	1300-1 409 (500-1)	1360-1 469 (500-1)	1640-2 1/4 749 (800-2 1/4)	NA

SE-2, 05 SEP 2024 to 03 OCT 2024

SE-2, 05 SEP 2024 to 03 OCT 2024