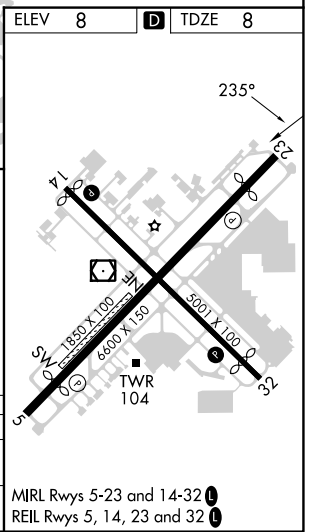
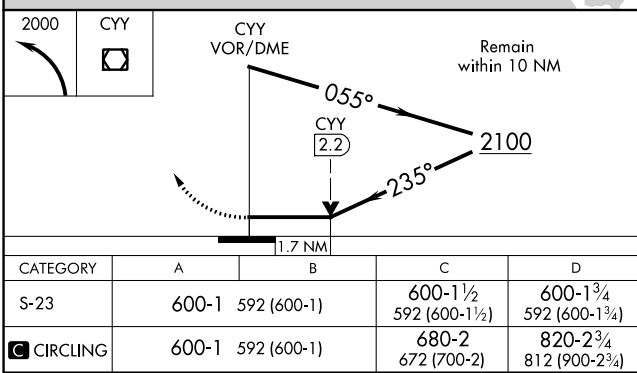
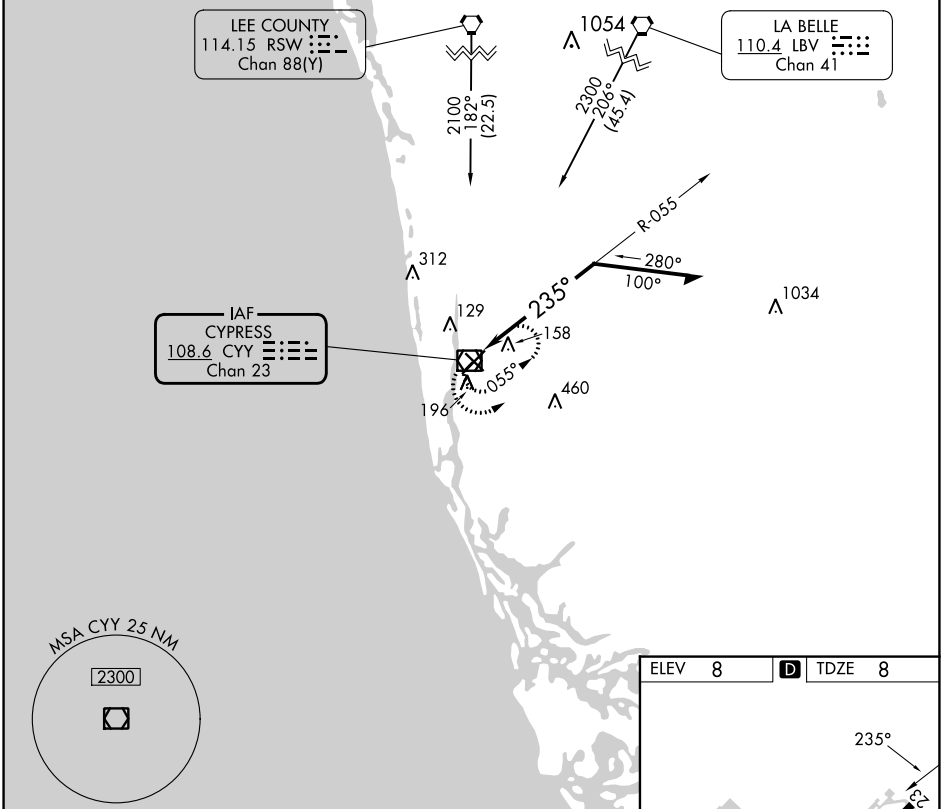


VOR/DME	CYY	APP CRS	Rwy Idg	5000
108.6		235°	TDZE	8
Chan 23			Apt Elev	8

VOR RWY 23

NAPLES MUNI (APF)

Helicopter visibility reduction below 3/4 SM NA.		MISSED APPROACH: Climbing left turn to 2000 in CYY VOR/DME holding pattern.			
ATIS 134.225	FORT MYERS APP CON* 124.125 371.85	NAPLES TOWER* 128.5 (CTAF)	GND CON 121.6	CLNC DEL 118.0	CLNC DEL 124.125 (When twr closed)



SE-3, 05 SEP 2024 to 03 OCT 2024

SE-3, 05 SEP 2024 to 03 OCT 2024