

(TRUCK5.TRUCK) 24025

# TRUCK FIVE DEPARTURE (OBSTACLE)

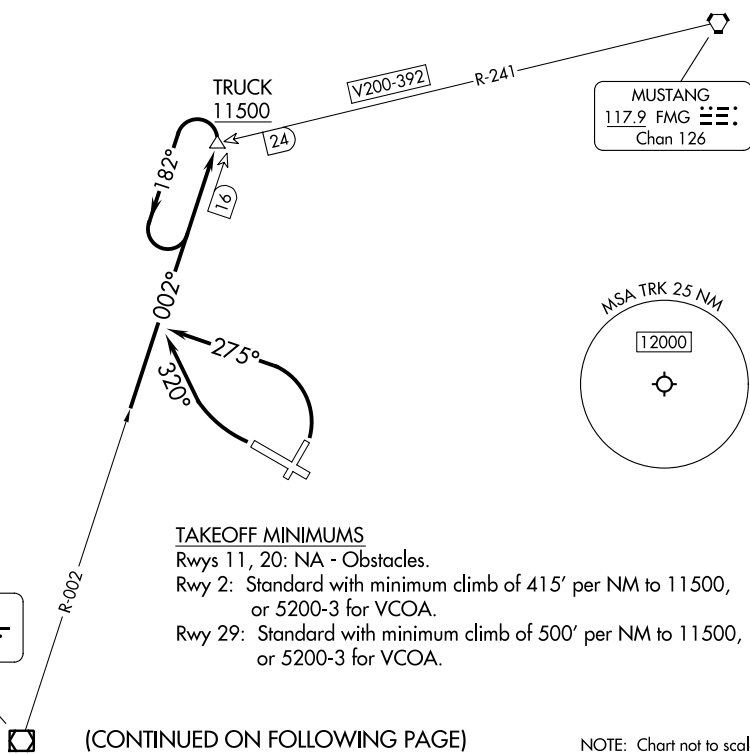
AL-6021 (FAA)

TRUCKEE-TAHOE (TRK)  
TRUCKEE, CALIFORNIA

OAKLAND CENTER  
127.95 316.1  
D-ATIS  
118.0  
TRUCKEE TOWER \*  
120.575  
UNICOM  
122.95

PALISADES  
113.2 SWR  
Chan 79

MUSTANG  
117.9 FMG  
Chan 126



### TAKEOFF MINIMUMS

Rwys 11, 20: NA - Obstacles.  
 Rwy 2: Standard with minimum climb of 415' per NM to 11500, or 5200-3 for VCOA.  
 Rwy 29: Standard with minimum climb of 500' per NM to 11500, or 5200-3 for VCOA.

(CONTINUED ON FOLLOWING PAGE)

NOTE: Chart not to scale.

### DEPARTURE ROUTE DESCRIPTION

**TAKEOFF RUNWAY 2:** Climbing left turn to 11500 on heading 275° and SWR R-002 to TRUCK INT, thence. . . , or for climb in visual conditions cross Truckee-Tahoe Airport heading 290° at or above 9100, then proceed on SWR R-002 to TRUCK INT. When executing VCOA, notify ATC prior to departure. Thence. . .

**TAKEOFF RUNWAY 29:** Climbing right turn to 11500 on heading 320° and SWR VOR/DME R-002 to TRUCK INT, thence. . . , or for climb in visual conditions cross Truckee-Tahoe Airport heading 290° at or above 9100, then proceed on SWR R-002 to TRUCK INT. When executing VCOA, notify ATC prior to departure. thence. . .

. . . continue climb in TRUCK INT holding pattern to cross TRUCK INT at or above 11500 before proceeding on course.

**VCOA RUNWAYS 2, 29:** Obtain ATC approval for VCOA when requesting IFR clearance. Climb in visual conditions to cross Truckee-Tahoe Airport heading 290° at or above 9100, then proceed on SWR VOR/DME R-002 to TRUCK INT, thence. . .

. . . continue climb in TRUCK INT holding pattern to cross TRUCK INT at or above 11500 before proceeding on course.

# TRUCK FIVE DEPARTURE (OBSTACLE)

(TRUCK5.TRUCK) 29DEC22

TRUCKEE, CALIFORNIA  
TRUCKEE-TAHOE (TRK)

SW-2, 05 SEP 2024 to 03 OCT 2024

SW-2, 05 SEP 2024 to 03 OCT 2024