

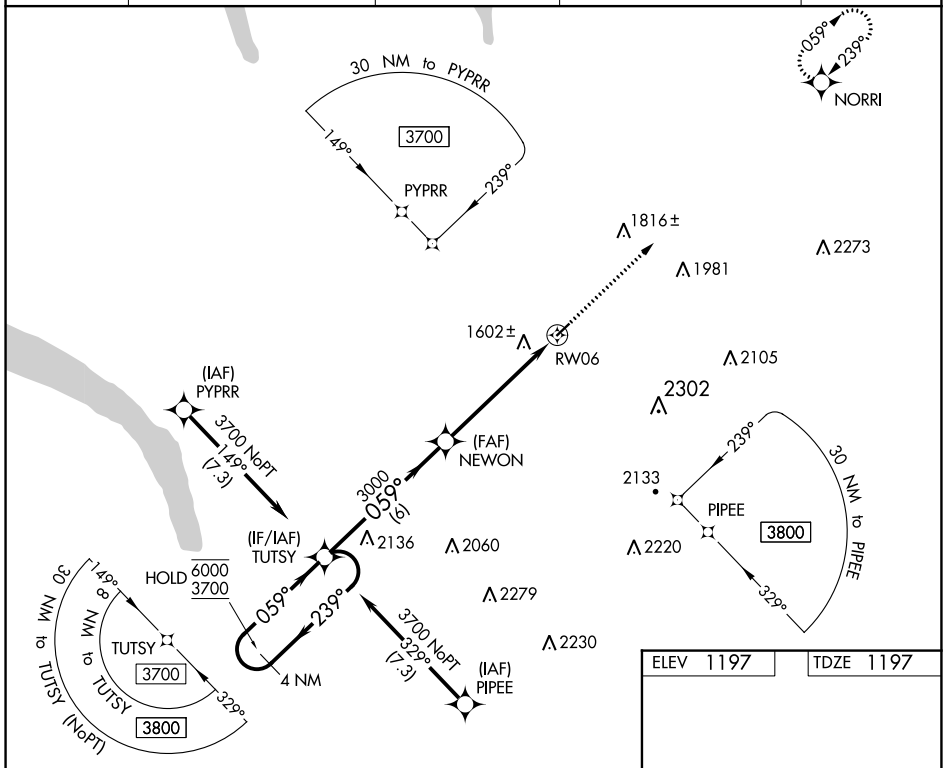
APP CRS	Rwy Idg	3401
059°	TDZE	1197
	Apt Elev	1197

RNAV (GPS) RWY 6

CORTLAND COUNTY/CHASE FLD (N03)

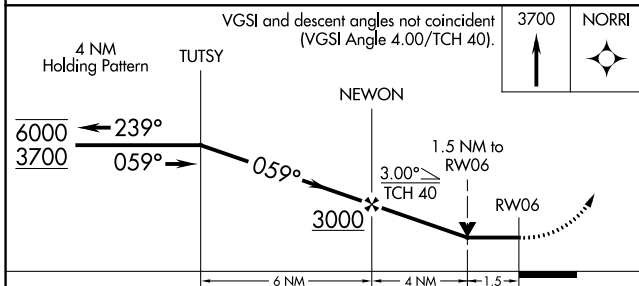
RNP APCH.		MISSED APPROACH: Climb to 3700 direct NORRI and hold.		
Rwy 6 helicopter visibility reduction below 3/4 SM NA.				

AWOS-3 132.225	BINGHAMTON APP CON ★ 118.6 257.625 (S-S-E)	ELMIRA APP CON ★ 124.3 257.8 (W)	SYRACUSE APP CON 126.125 269.125 (N)	UNICOM 122.8 (CTAF)
--------------------------	--	--	--	-------------------------------

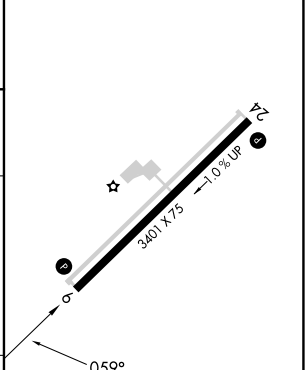


NE-2, 05 SEP 2024 to 03 OCT 2024

NE-2, 05 SEP 2024 to 03 OCT 2024



ELEV 1197	TDZE 1197
-----------	-----------



CATEGORY	A	B	C	D
LNVA MDA	1860-1	663 (700-1)	1860-1 7/8 663 (700-1 7/8)	NA
CIRCLING	1940-1 743 (800-1)	1980-1 783 (800-1)	2240-3 1043 (1100-3)	NA

REIL Rwy 24
 MRL Rwy 6-24