

WAAS CH 42718 W36A	APP CRS 360°	Rwy ldg TDZE Apt Elev	5001 42 46
--	------------------------	-----------------------------	---------------------------------------

RNAV (GPS) RWY 36

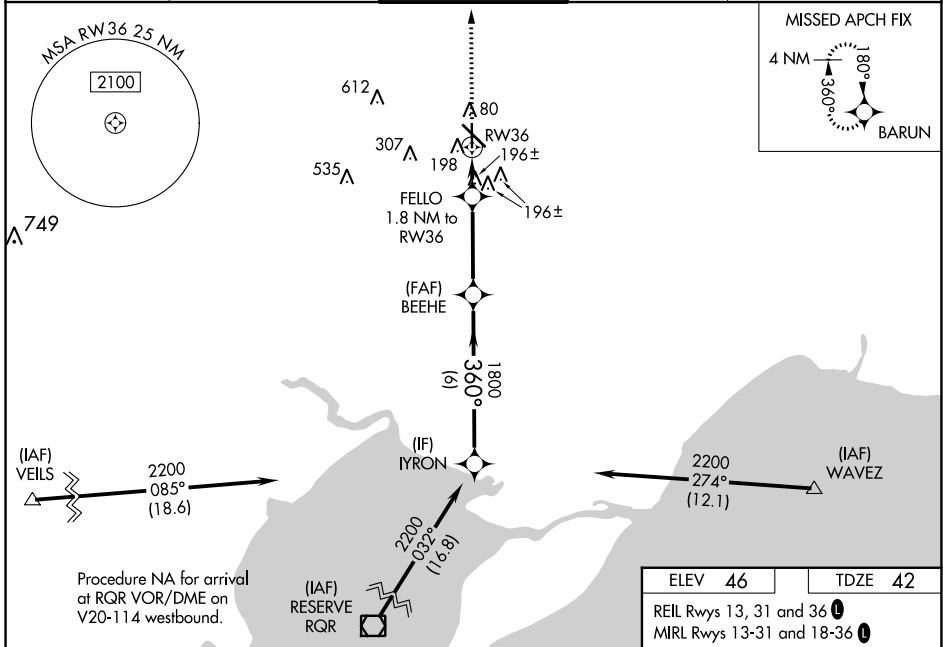
HAMMOND NORTHSORE RGNL (HDC)

RNP APCH - GPS.

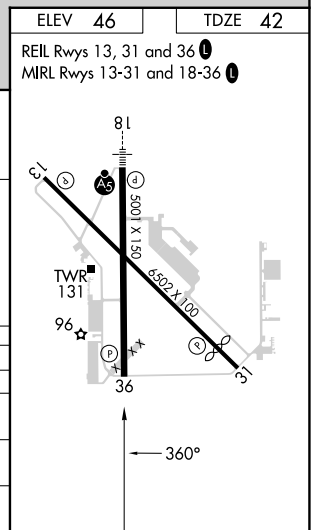
⚠ Baro-VNAV and VDP NA when using Louis Armstrong New Orleans Intl altimeter setting.
⚠ Rwy 36 helicopter visibility reduction below 3/4 SM NA. For uncompensated Baro-VNAV systems, LNAV/VNAV NA below -15°C or above 54°C. When local altimeter setting not received, use Louis Armstrong New Orleans Intl altimeter setting and increase LPV DA to 374 feet and all visibilities 1/4 SM; increase LNAV/VNAV DA to 528 feet and all visibilities 1/4 SM; increase all MDAs 100 feet and LNAV visibility Cat C/D 1/4 SM, and Circling visibility Cat C/D 1/2 SM.

MISSED APPROACH:
Climb to 1800 direct BARUN and hold.

ATIS 118.325	NEW ORLEANS APP CON 119.3 350.35	HAMMOND TOWER ★ 120.575 (CTAF) 0	GND CON 119.85	CLNC DEL 119.3 (When twr closed)
------------------------	--	---	--------------------------	---



	YRON	BEEHE	FELLO	RW36	BARUN
	2200	1800	1800	1800	1800
	360°	180°	180°	180°	360°
	6 NM	3.5 NM	0.6 NM	1.2 NM	
	GP 3.00°		660		
			1.2 NM to RW36		
CATEGORY	A	B	C	D	
LPV DA		292-3/4	250 (300-3/4)		
LNAV/VNAV DA		446-1 1/8	404 (400-1 1/8)		
LNAV MDA	460-1	418 (500-1)	460-1 1/8	418 (500-1 1/8)	
CIRCLING	500-1	454 (500-1)	620-1 1/2 574 (600-1 1/2)	920-2 3/4 874 (900-2 3/4)	



SC-4, 05 SEP 2024 to 03 OCT 2024

SC-4, 05 SEP 2024 to 03 OCT 2024