

WAAS CH <b>63129</b> <b>W08A</b>	APP CRS <b>082°</b>	Rwy Idg <b>3501</b> TDZE <b>739</b> Apt Elev <b>741</b>
--	------------------------	---

# RNAV (GPS) RWY 8

MACKINAC ISLAND (MCD)

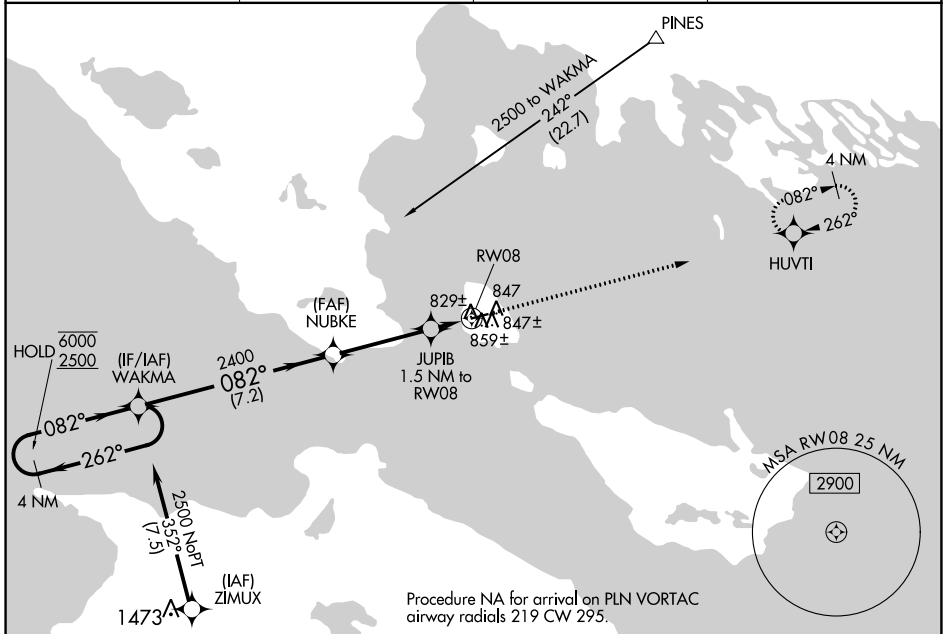
RNP APCH.

**▼** Rwy 8 helicopter visibility reduction below 1 SM NA. When local altimeter setting not received, use Pellston altimeter setting and increase all MDA 60 feet, increase LP and LNAV Cat C visibility 1/8 SM and Circling Cat C visibility 1/4 SM. Straight-in and Circling Rwy 8 NA at night.

**▲**

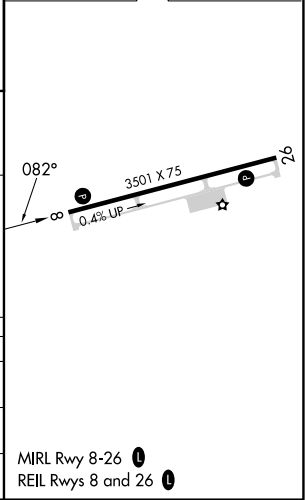
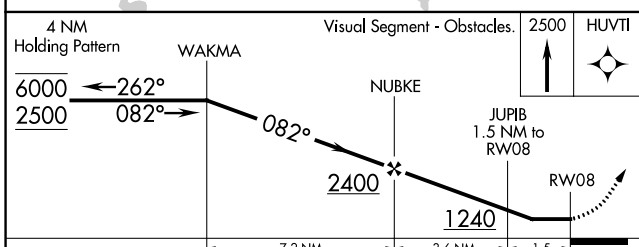
MISSED APPROACH:  
Climb to 2500 direct HUVTI and hold.

AWOS-3 <b>118.275</b>	MINNEAPOLIS CENTER <b>134.6 354.05</b>	UNICOM <b>122.7 (CTAF)</b>	<b>122.8</b>
--------------------------	---	-------------------------------	--------------



Procedure NA for arrival on PLN VORTAC  
airway radials 219 CW 295.

ELEV 741	TDZE 739
----------	----------



CATEGORY	A	B	C	D
LP MDA	1080-1 341 (400-1)			NA
LNAV MDA	1120-1	381 (400-1)	1120-1 1/8 381 (400-1 1/8)	NA
<b>C</b> CIRCLING	1320-1	579 (600-1)	1320-1 1/2 579 (600-1 1/2)	NA

MIRL Rwy 8-26 **1**  
REIL Rwy 8 and 26 **1**

EC-1, 05 SEP 2024 to 03 OCT 2024

EC-1, 05 SEP 2024 to 03 OCT 2024