

VORTAC STL 117.4 Chan 121	APP CRS 208°	Rwy Idg 3800 TDZE 437 Apt Elev 437
---	------------------------	---

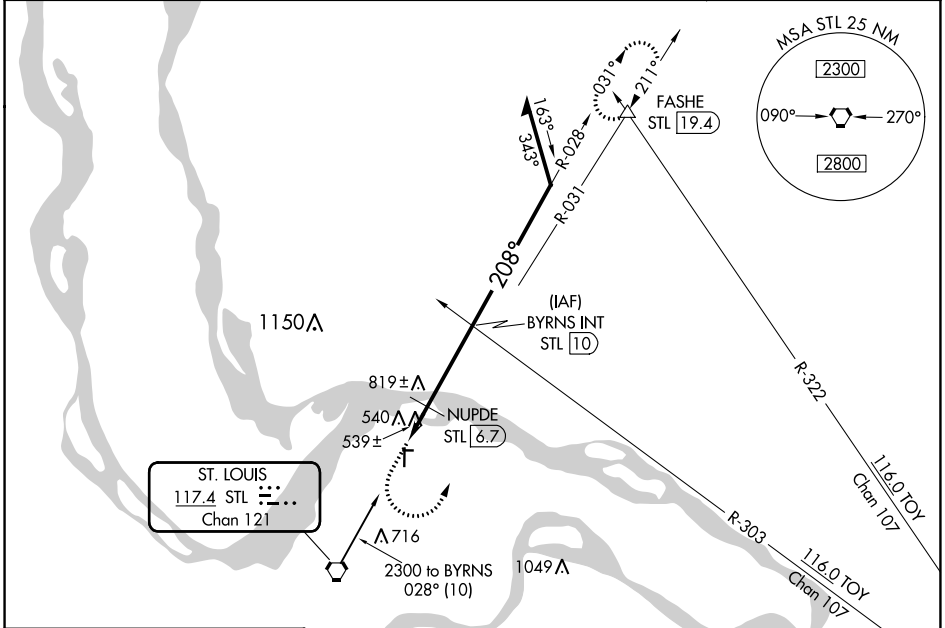
VOR RWY 18

ST CHARLES COUNTY RGNL/SMARTT FLD (SE/T)

⚠ When local altimeter setting not received, use St Louis Lambert Intl altimeter setting and increase all MDAs 60 feet and Circling visibility Cat C ¼ SM. NUPDE fix minimums: increase Circling visibility Cat C ¼ SM. Straight-in minimums NA with St Louis Lambert Intl altimeter setting.

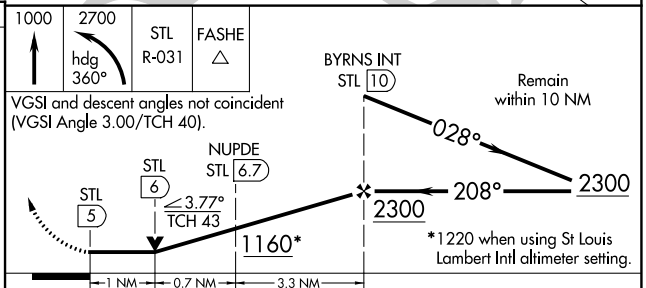
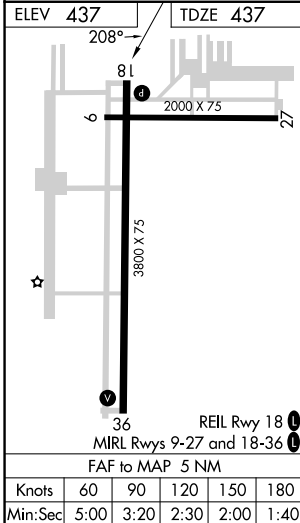
MISSED APPROACH: Climb to 1000 then climbing left turn to 2700 via heading 360° and STL R-031 to FASHE INT/19.4 DME and hold.

ASOS 118.075	ST. LOUIS APP CON 124.2 353.9	CLNC DEL 121.6	UNICOM 122.7 (CTAF) 0
------------------------	---	--------------------------	---------------------------------



NC-3, 05 SEP 2024 to 03 OCT 2024

NC-3, 05 SEP 2024 to 03 OCT 2024



CATEGORY	A	B	C	D
S-18	1160-1	723 (800-1)	1160-2 723 (800-2)	NA
CIRCLING	1160-1	723 (800-1)	1220-2¼ 783 (800-2¼)	NA
NUPDE FIX MINIMUMS				
S-18	800-1 363 (400-1)			NA
CIRCLING	840-1 403 (500-1)	900-1 463 (500-1)	1220-2¼ 783 (800-2¼)	NA