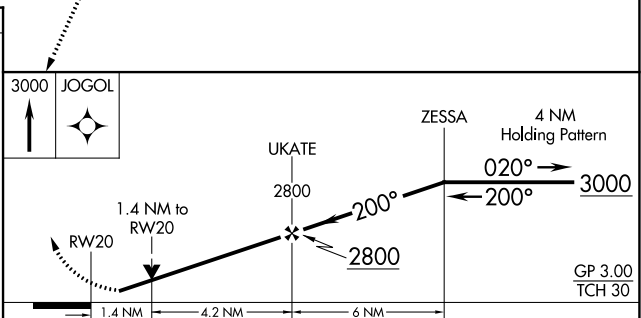
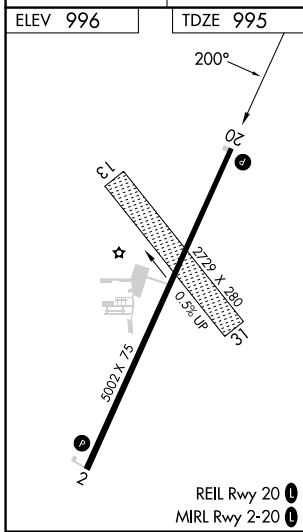
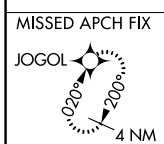
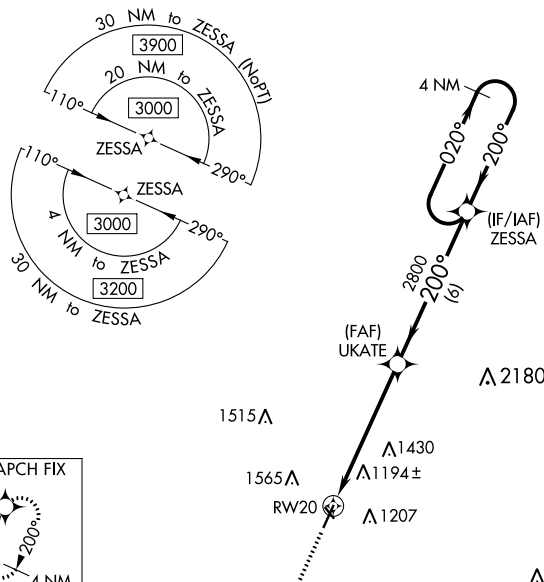


WAAS CH 90541 W20A	APP CRS 200°	Rwy Idg TDZE Apt Elev	5002 995 996
--	------------------------	-----------------------------	---

RNAV (GPS) RWY 20

SCHENCK FLD (ICL)

RNP APCH - GPS.		MISSED APPROACH: Climb to 3000 direct JOGOL and hold.
<p>▼ For uncompensated Baro-VNAV systems, LNAV/VNAV NA below -16°C (4°F) or above 54°C (130°F). Circling NA west of Rwy 2-20. Circling NA to Rwys 13 and 31. Rwy 20 helicopter visibility reduction below ¾ SM NA.</p> <p>▲</p>		
AWOS-3 132.025	MINNEAPOLIS CENTER 119.6 290.4	UNICOM 122.8 (CTAF) 0



CATEGORY	A	B	C	D
LPV DA	1261-1 266 (300-1)			
LNAV/VNAV DA	1489-1¾ 494 (500-1¾)			
LNAV MDA	1460-1	465 (500-1)	1460-1¾	465 (500-1¾)
<input checked="" type="checkbox"/> CIRCLING	1540-1 544 (600-1)	1720-1 724 (800-1)	1780-2¼ 784 (800-2¼)	1780-2½ 784 (800-2½)

NC-3, 05 SEP 2024 to 03 OCT 2024

NC-3, 05 SEP 2024 to 03 OCT 2024