

WAAS CH <b>62942</b> <b>W17A</b>	APP CRS <b>177°</b>	Rwy Idg TDZE Apt Elev	<b>4400</b> <b>1274</b> <b>1274</b>
--	------------------------	-----------------------------	---

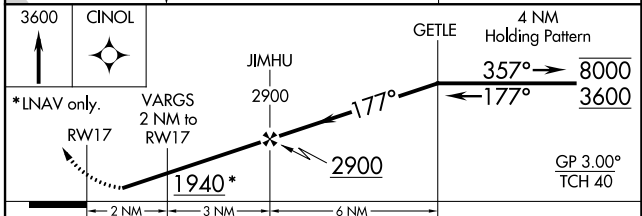
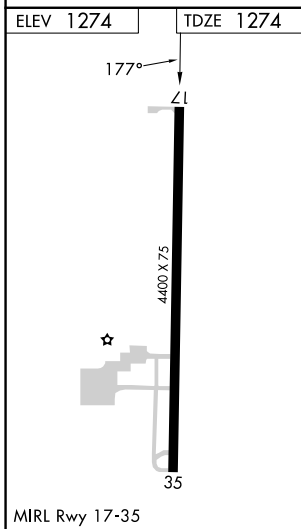
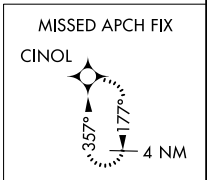
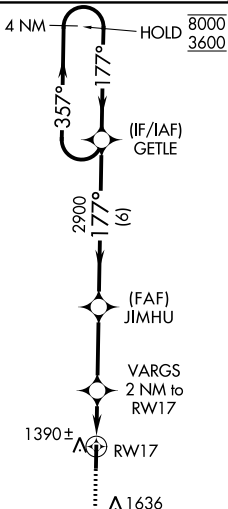
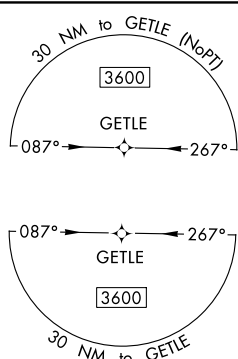
# RNAV (GPS) RWY 17

FAIRVIEW MUNI (6K4)

RNP APCH. **NA** Circling Rwy 35 NA at night. Rwy 17 helicopter visibility reduction below 3/4 SM NA. Baro-VNAV NA. Use Vance AFB altimeter setting; when not received, use Watonga altimeter setting; increase LPV DA to 1622 feet and all visibilities 1/2 SM; increase LNAV/VNAV DA to 1678 feet and all visibilities 1/4 SM; increase all MDA 40 feet.

MISSED APPROACH: Climb to 3600 direct CINOL and hold.

KEND ATIS ★ <b>115.4 263.15</b>	VANCE APP CON ★ <b>126.75 346.325</b>	UNICOM <b>122.8 (CTAF)</b>
------------------------------------	--	-------------------------------



CATEGORY	A	B	C	D
LPV DA		1592-1	318 (400-1)	
LNAV/VNAV DA		1648-1	374 (400-1)	
LNAV MDA	1720-1	446 (500-1)	1720-1 3/8	446 (500-1 3/8)
<input checked="" type="checkbox"/> CIRCLING	1840-1 566 (600-1)	2020-1 746 (800-1)	2020-2 1/4 746 (800-2 1/4)	2180-3 906 (1000-3)

SC-1, 05 SEP 2024 to 03 OCT 2024

SC-1, 05 SEP 2024 to 03 OCT 2024