

(SLENA1.SLENA) 24025

AL-6114 (FAA)

PLEASANTON MUNI (PEZ)
PLEASANTON, TEXAS

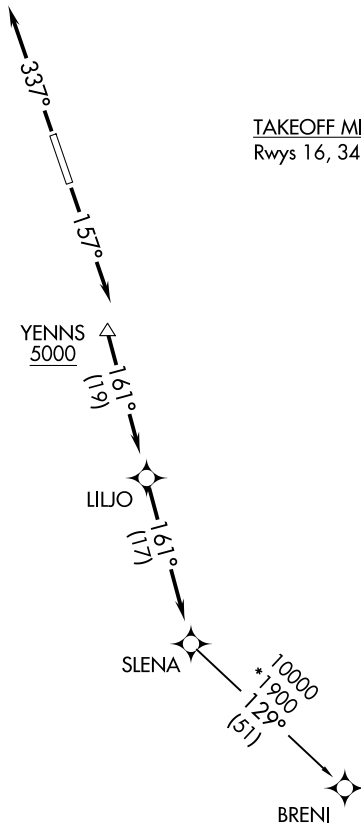
SLENA ONE DEPARTURE (RNAV)

SAN ANTONIO DEP CON
125.7 290.225
CLNC DEL
121.375

RNAV 1 - DME/DME IRU or GPS.

RADAR required.

**TOP ALTITUDE:
ASSIGNED BY ATC**



TAKEOFF MINIMUMS
Rwys 16, 34: Standard.

NOTE: Chart not to scale.



DEPARTURE ROUTE DESCRIPTION

TAKEOFF RUNWAY 16: Climb on heading 157° or as assigned by ATC, for vectors to YENNS, thence

TAKEOFF RUNWAY 34: Climb on heading 337° or as assigned by ATC, for vectors to YENNS, thence

. . . . on track 161° to LILJO, then on track 161° to SLENA, then on transition.
Maintain ATC assigned altitude.

BRENI TRANSITION (SLENA1.BRENI)

SLENA ONE DEPARTURE (RNAV)
(SLENA1.SLENA) 25JAN24

PLEASANTON, TEXAS
PLEASANTON MUNI (PEZ)

SC-3, 05 SEP 2024 to 03 OCT 2024

SC-3, 05 SEP 2024 to 03 OCT 2024