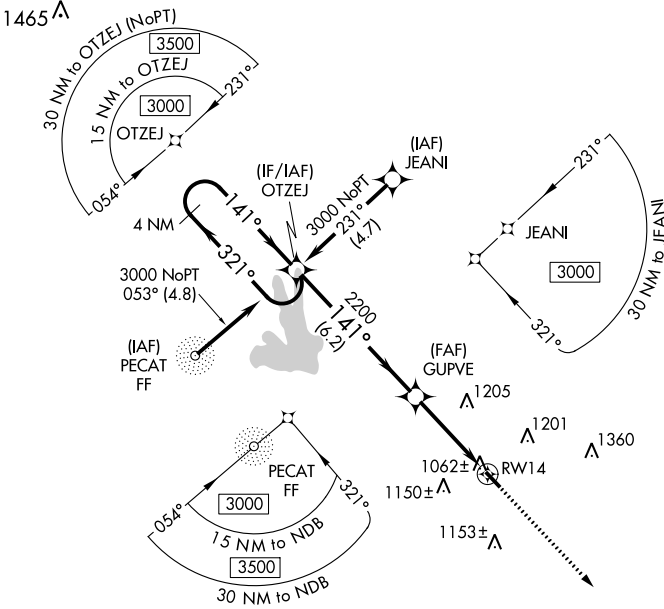


WAAS CH 70429 W14A	APP CRS 141°	Rwy Idg TDZE Apt Elev	3201 958 958
--	------------------------	-----------------------------	---

RNAV (GPS) RWY 14

GRIFFIN-SPALDING COUNTY (6A2)

RNP APCH.		When local altimeter setting not received, use Atlanta Rgnl Falcon Fld altimeter setting and increase all MDA 60 feet. Rwy 14 helicopter visibility reduction below 1 SM NA. Procedure NA at night.		MISSED APPROACH: Climb to 3000 direct LUFEV and hold.	
AWOS-3 119.750	ATLANTA APP CON 128.575 343.675	CLNC DEL 128.575 343.675	UNICOM 123.075 (CTAF) 0		



SE-4, 05 SEP 2024 to 03 OCT 2024

SE-4, 05 SEP 2024 to 03 OCT 2024

ELEV 958	D	TDZE 958
-----------------	----------	-----------------

REIL Rwy 14 and 32
MIRL Rwy 14-32

4 NM Holding Pattern		Visual Segment - Obstacles.	3000	LUFEV															
<table border="1"> <tr> <td>CATEGORY</td> <td>A</td> <td>B</td> <td>C</td> <td>D</td> </tr> <tr> <td>LP MDA</td> <td>1320-1</td> <td>362 (400-1)</td> <td colspan="2">NA</td> </tr> <tr> <td>LNAV MDA</td> <td>1400-1</td> <td>442 (500-1)</td> <td colspan="2">NA</td> </tr> </table>	CATEGORY	A	B	C	D	LP MDA	1320-1	362 (400-1)	NA		LNAV MDA	1400-1	442 (500-1)	NA					
CATEGORY	A	B	C	D															
LP MDA	1320-1	362 (400-1)	NA																
LNAV MDA	1400-1	442 (500-1)	NA																