

APP CRS 189°	Rwy ldg 5499
	TDZE 968
	Apt Elev 988

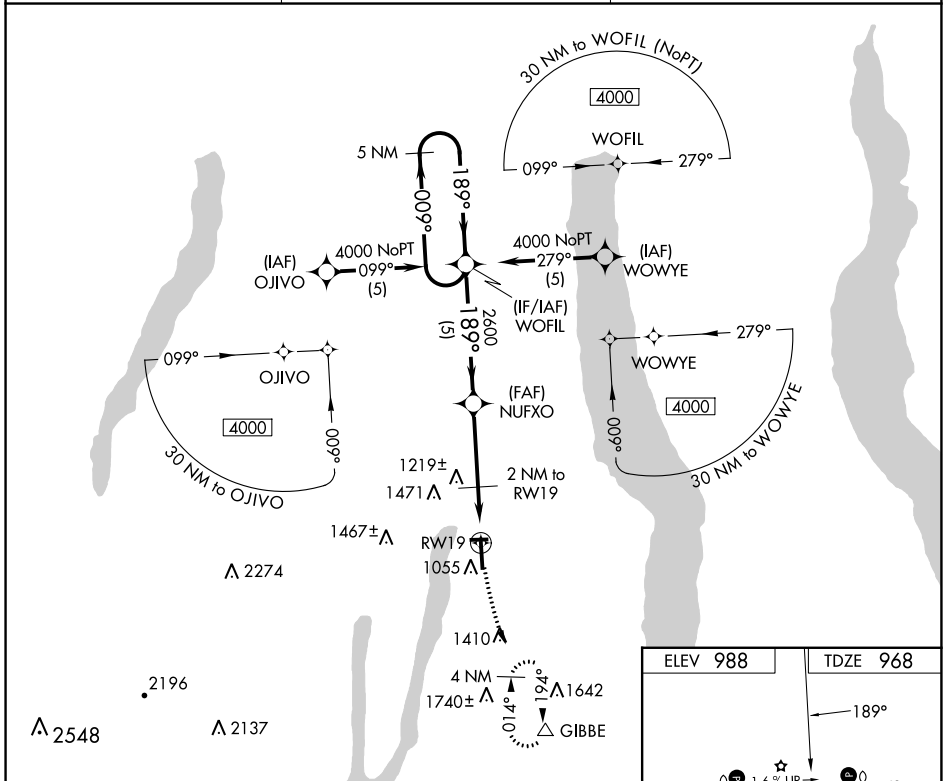
RNAV (GPS) RWY 19

PENN YAN/YATES COUNTY (P.E.O)

▼ DME/DME RNP-0.3 NA. When local altimeter setting not received, use Elmira altimeter setting; increase all MDA 80 feet and visibility S-19 Cat C and D, and Circling Cat B and C ¼ SM.

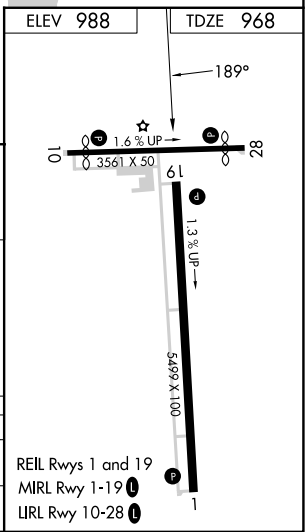
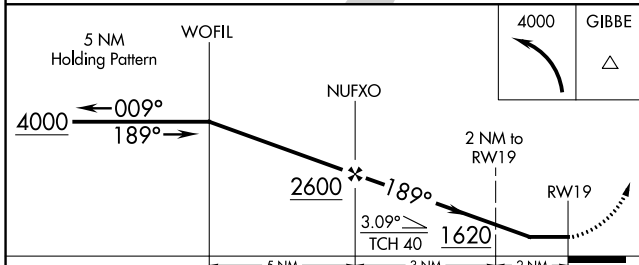
▲ MISSED APPROACH: Climbing left turn to 4000 direct GIBBE and hold, continue climb-in-hold to 4000.

ASOS 121.175	ELMIRA APP CON * 124.3 257.8	UNICOM 123.0 (CTAF) 0
------------------------	--	---------------------------------



NE-2, 05 SEP 2024 to 03 OCT 2024

NE-2, 05 SEP 2024 to 03 OCT 2024



CATEGORY	A	B	C	D
LNVA MDA	1400-1	432 (500-1)	1400-1¼ 432 (500-1¼)	1400-1½ 432 (500-1½)
CIRCLING	1500-1 512 (600-1)	1720-1 732 (800-1)	1820-2½ 832 (900-2½)	1980-3 992 (1000-3)