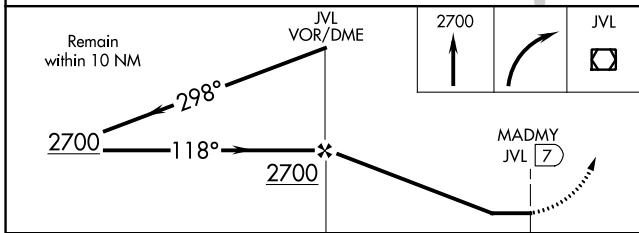
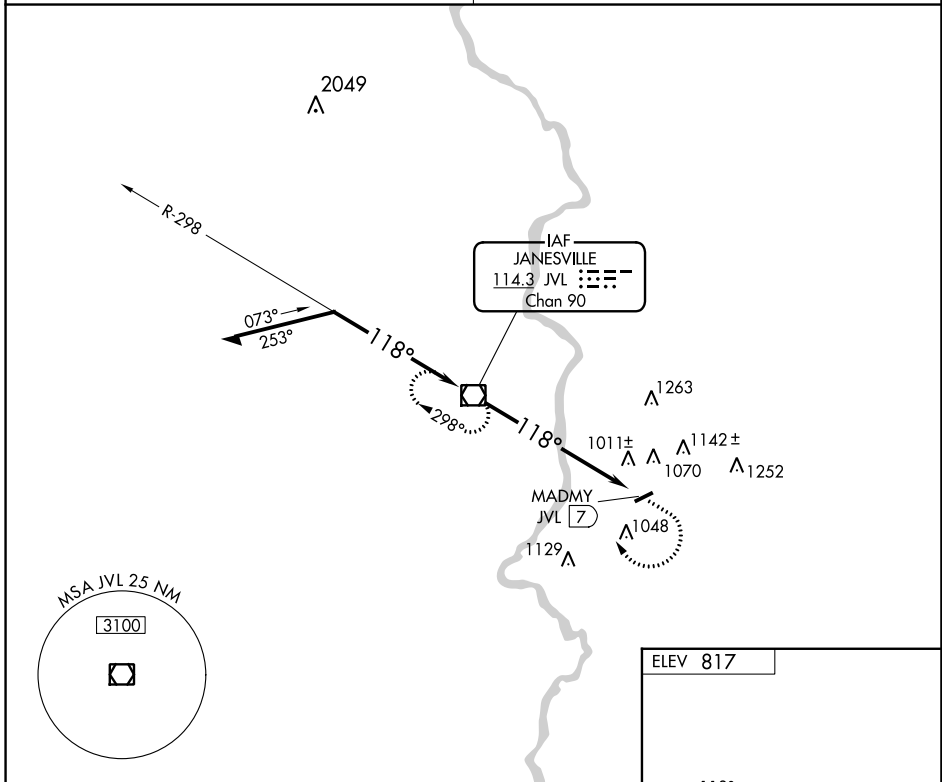


VOR/DME JVL <b>114.3</b> Chan <b>90</b>	APP CRS <b>118°</b>	Rwy Idg TDZE Apt Elev	<b>N/A</b> <b>N/A</b> <b>817</b>
---	------------------------	-----------------------------	--

**VOR-A**  
BELOIT (44C)

<p><b>▼</b> Use Janesville altimeter setting, when not received, use Chicago/Rockford Intl altimeter setting.</p> <p><b>▲ NA</b></p>	<p>MISSED APPROACH: Climb to 2700 then right turn direct JVL VOR/DME and hold.</p>
<p>ROCKFORD APP CON <b>121.0 327.0</b></p>	<p>UNICOM <b>122.7 (CTAF) 0</b></p>



ELEV 817

LIRL Rwy 7-25 0

FAF to MAP 7 NM	
Knots	60 90 120 150 180
Min:Sec	7:00 4:40 3:30 2:48 2:20

CATEGORY	A	B	C	D
CIRCLING	1440-1 623 (700-1)	1540-1 723 (800-1)		NA
CHICAGO/ROCKFORD INTL ALTIMETER SETTING MINIMUMS				
CIRCLING	1480-1 663 (700-1)	1580-1 763 (800-1)		NA

EC-3, 05 SEP 2024 to 03 OCT 2024

EC-3, 05 SEP 2024 to 03 OCT 2024