

APP CRS <b>002°</b>	Rwy Idg <b>5001</b>
	TDZE <b>673</b>
	Apt Elev <b>679</b>

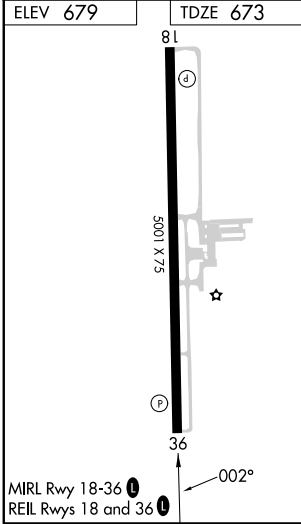
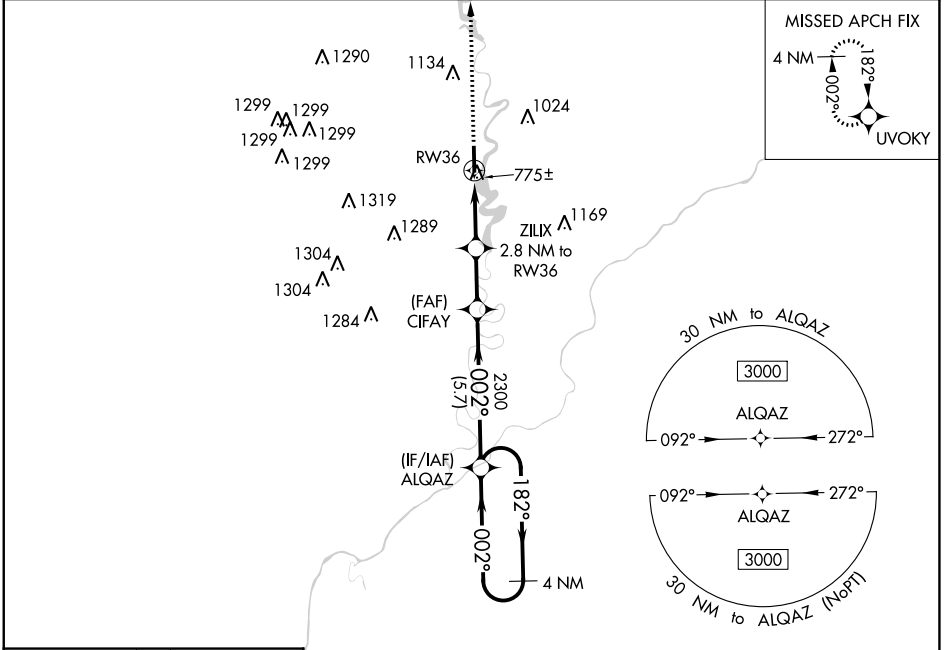
# RNAV (GPS) RWY 36

WHITE COUNTY (MCX)

**▽** DME/DME RNP-0.3 NA. Straight-in Rwy 36 NA at night, Circling Rwy 36 NA at night. Rwy 36 helicopter visibility reduction below 1 SM NA.

**▲** MISSED APPROACH: Climb to 3000 direct UVOKY and hold.

AWOS-3P <b>124.05</b>	GRISSOM APP CON ★ <b>123.85 291.675</b>	UNICOM <b>122.8 (CTAF) 0</b>
--------------------------	--	---------------------------------



ELEV 679	TDZE 673
3000	UVOKY
VGSJ and descent angles not coincident (VGSJ Angle 4.00/TCH 25).	
4 NM	Holding Pattern
ZILIX 2.8 NM to RW36	CIFAY
RW36	ALQAZ
2.8 NM	2.2 NM
5.7 NM	3000
1600	2300
3.00°	TCH 40
002°	182°
002°	3000
CATEGORY	A B C D
LNAV MDA	1040-1 367 (400-1)
<b>C</b> CIRCLING	1200-1 521 (600-1) 1340-1 661 (700-1) 1500-2½ 821 (900-2½) 1500-2¾ 821 (900-2¾)

EC-2, 05 SEP 2024 to 03 OCT 2024

EC-2, 05 SEP 2024 to 03 OCT 2024