

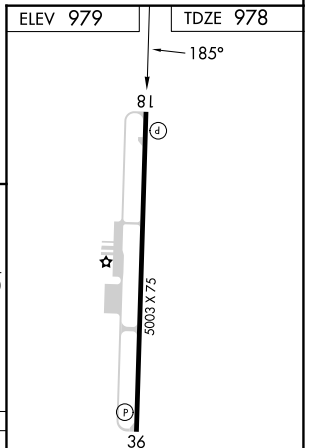
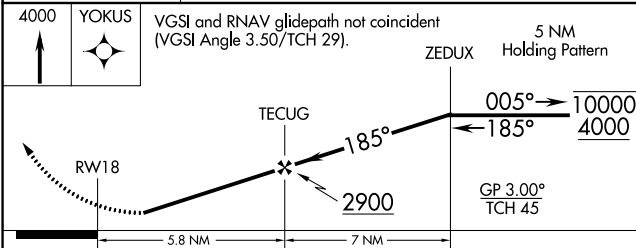
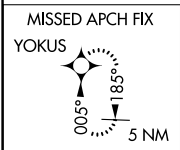
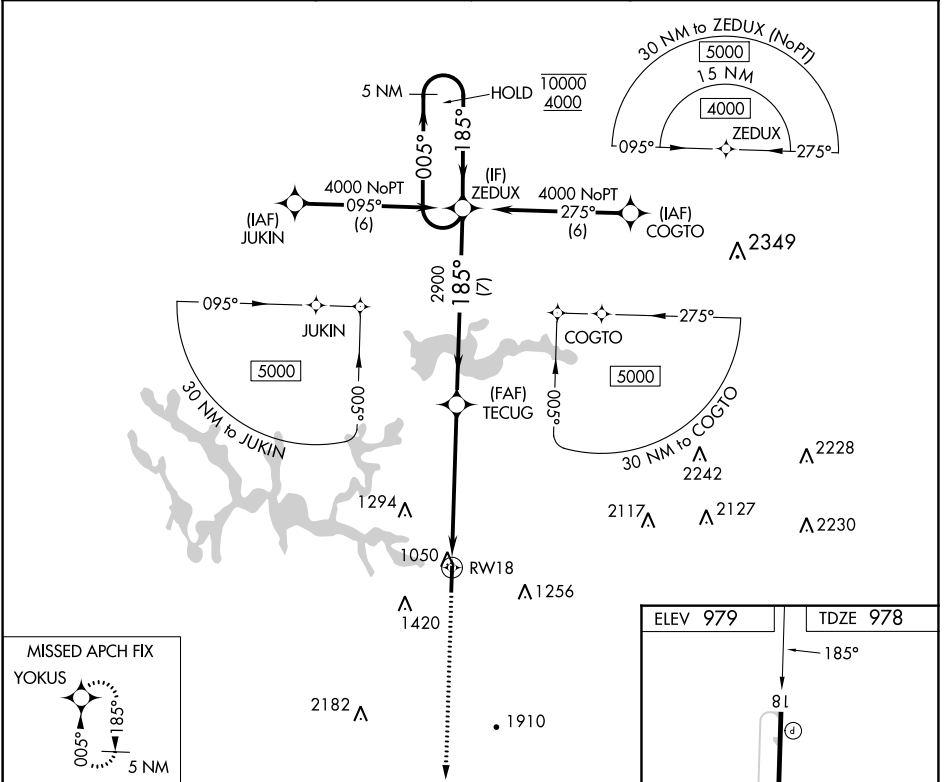
WAAS CH <b>42708</b> <b>W18A</b>	APP CRS <b>185°</b>	Rwy Idg TDZE Apt Elev	<b>5003</b> <b>978</b> <b>979</b>
--	------------------------	-----------------------------	---

# RNAV (GPS) Z RWY 18

WINCHESTER MUNI (BGF)

RNP APCH.	MISSED APPROACH: Climb to 4000 direct YOKUS and hold.
Rwy 18 helicopter visibility reduction below 3/4 SM NA. For uncompensated Baro-VNAV systems, LNAV/VNAV NA below -16°C or above 54°C.	

AWOS-3 <b>121.675</b>	MEMPHIS CENTER <b>128.15 323.125</b>	GCO <b>121.725</b>	UNICOM <b>122.8</b> (CTAF)
--------------------------	---	-----------------------	-------------------------------



CATEGORY	A	B	C	D
LPV DA		1375-1½	397 (400-1½)	
LNAV/VNAV DA		1596-2¼	618 (700-2¼)	

MIRL Rwy 18-36  
REIL Rwy 18 and 36

SE-1, 05 SEP 2024 to 03 OCT 2024

SE-1, 05 SEP 2024 to 03 OCT 2024