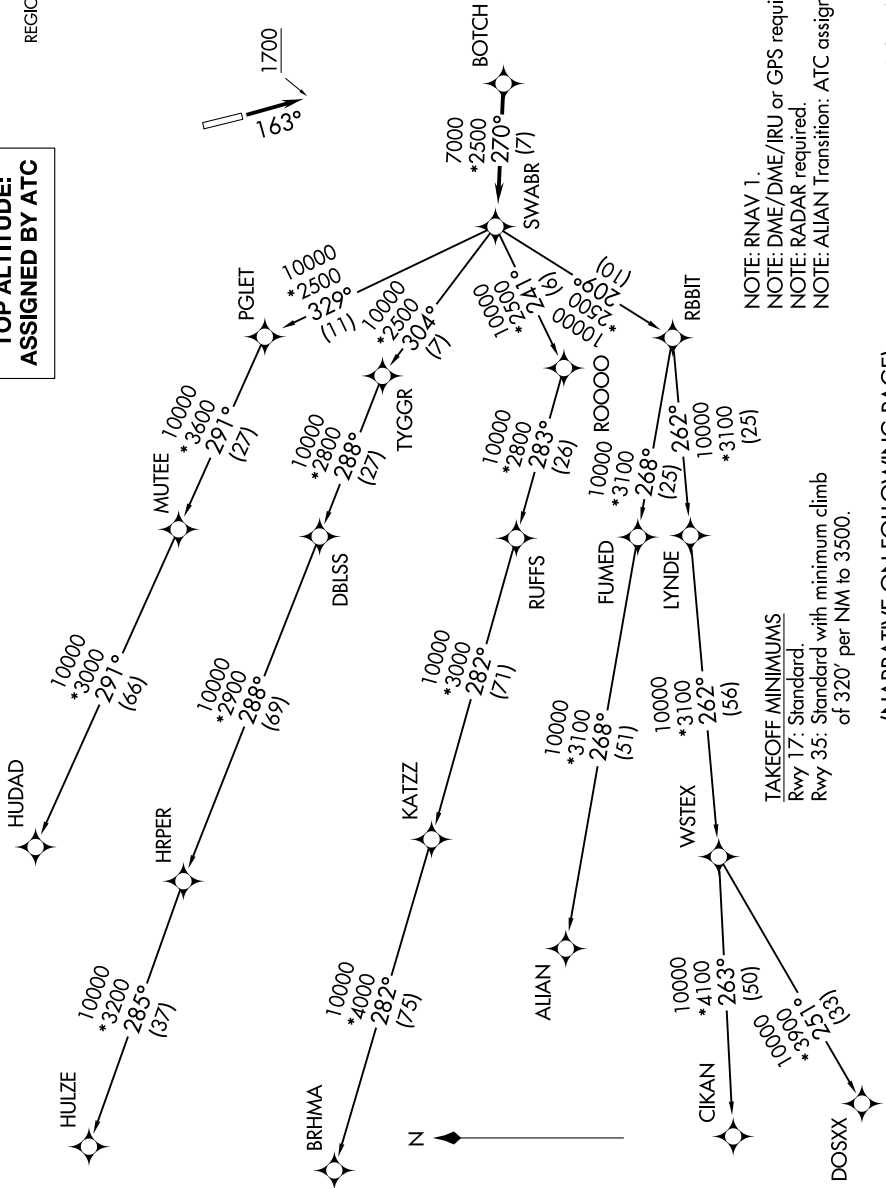


SWABR ONE DEPARTURE (RNAV)

CTAF
122.8
REGIONAL DEP CON
118.1 306.95

TOP ALTITUDE: ASSIGNED BY ATC



NOTE: RNAV 1.
 NOTE: DME/DME/IRU or GPS required.
 NOTE: RADAR required.
 NOTE: ALIAN Transition: ATC assigned only.

TAKEOFF MINIMUMS
 Rwy 17: Standard.
 Rwy 35: Standard with minimum climb
 of 320' per NM to 3500.

NOTE: Chart not to scale.

(NARRATIVE ON FOLLOWING PAGE)

SC-2, 05 SEP 2024 to 03 OCT 2024

SC-2, 05 SEP 2024 to 03 OCT 2024