

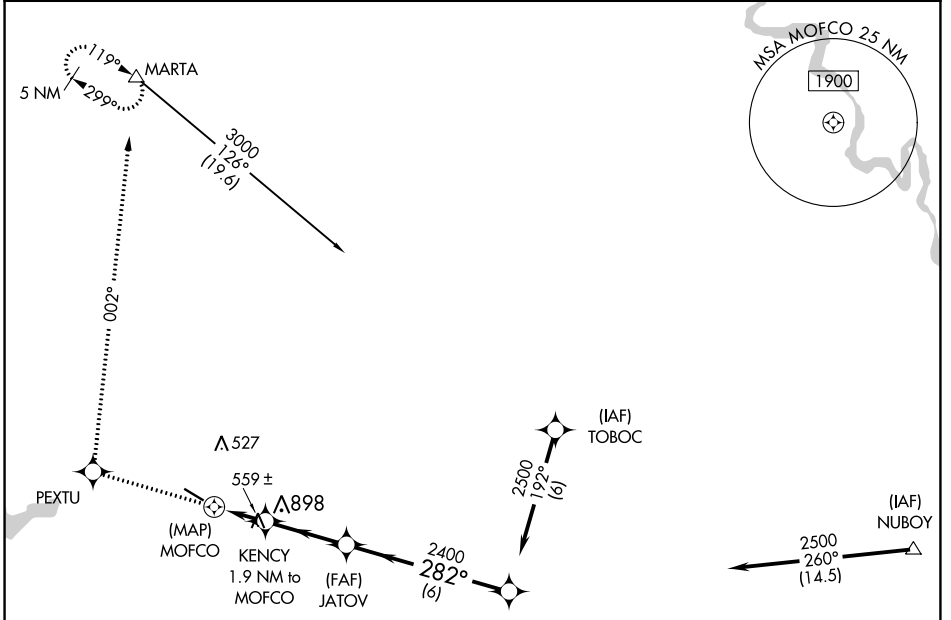
APP CRS	Rwy Idg 4402
282°	TDZE 311
	Apt Elev 319

RNAV (GPS) RWY 30

HART (3R4)

RNP APCH.	MISSED APPROACH: Climb to 4500 direct PEXTU and right turn via track 002° to MARTA and hold, continue climb in hold to 4500.
<p>▼ Rwy 30 helicopter visibility reduction below ¼ SM NA.</p> <p>▲ NA Use Fort Polk altimeter setting; when not received, use Natchitoches altimeter setting and increase all MDA 20 feet.</p>	

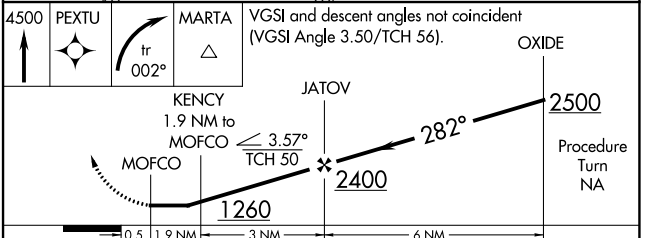
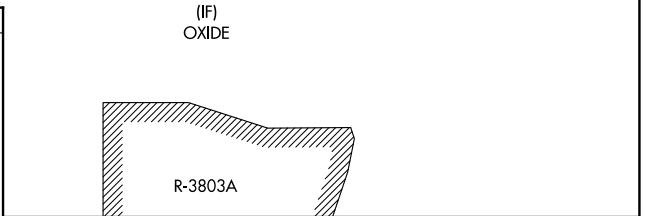
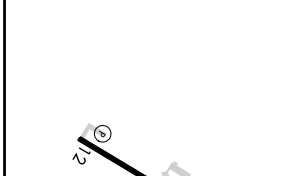
POLK APP CON 123.7 261.3	GCO 135.075	UNICOM 122.8 (CTAF)
------------------------------------	-----------------------	-------------------------------



SC-4, 05 SEP 2024 to 03 OCT 2024

SC-4, 05 SEP 2024 to 03 OCT 2024

ELEV 319	TDZE 311
----------	----------



REIL Rwys 12 and 30	MIRL Rwy 12-30			
CATEGORY	A	B	C	D
LNAV MDA	900-1	589 (600-1)	900-1¾ 589 (600-1¾)	NA