

APP CRS	Rwy Idg	<b>3558</b>
<b>229°</b>	TDZE	<b>896</b>
	Apt Elev	<b>896</b>

# RNAV (GPS) RWY 23

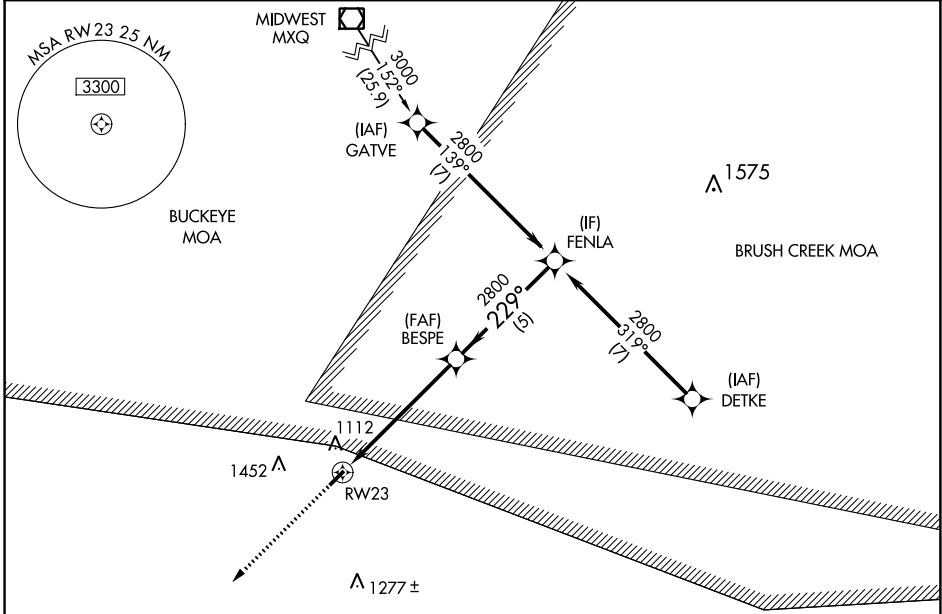
ALEXANDER SALAMON (A.M.T.)

RNP APCH - GPS.

Procedure NA at night. Rwy 23 helicopter visibility reduction below 1 SM NA.  
 NA Use Flemingsburg, Kentucky altimeter setting.

MISSED APPROACH: Climb to 2800 direct EDINE and hold.

FGX AWOS-3 <b>118.125</b>	INDIANAPOLIS CENTER <b>135.575 290.5</b>	UNICOM <b>122.8 (CTAF) 0</b>
------------------------------	---	---------------------------------

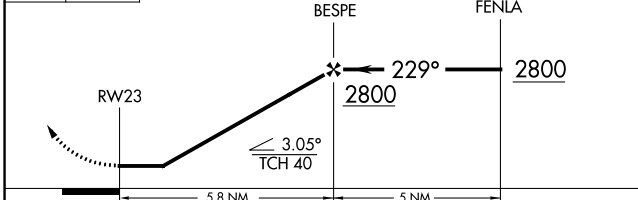


EC-2, 05 SEP 2024 to 03 OCT 2024

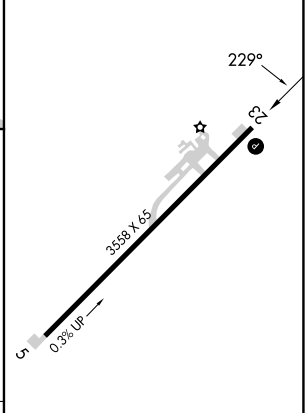
EC-2, 05 SEP 2024 to 03 OCT 2024



2800 EDINE  
 VGS1 and descent angles not coincident (VGS1 Angle 3.30/TCH 25).



ELEV 896	TDZE 896
----------	----------



CATEGORY	A	B	C	D
LNAV MDA	1460-1	564 (600-1)	1460-1½ 564 (600-1½)	NA

REIL Rwy 5 and 23 0  
 MIRL Rwy 5-23 0