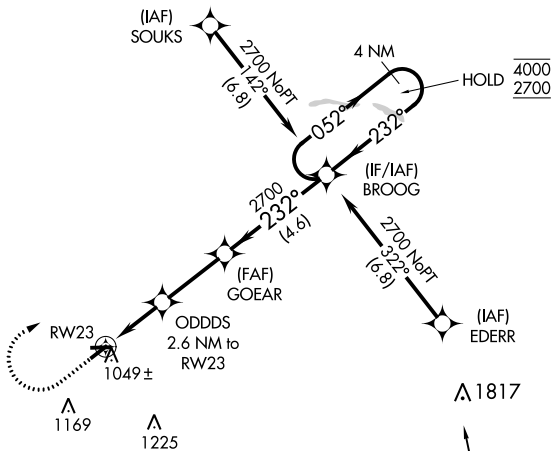
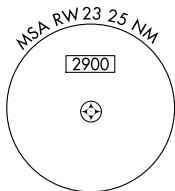


APP CRS	Rwy Idg	3760
232°	TDZE	932
	Apt Elev	936

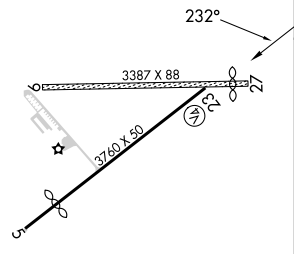
RNAV (GPS) RWY 23

SHERIDAN (5I4)

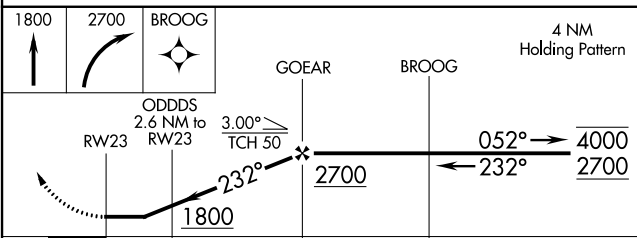
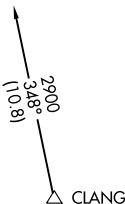
RNP APCH - GPS.		MISSED APPROACH: Climb to 1800 then climbing right turn to 2700 direct BROOG and hold.
▲ NA	Circling NA to Rwy 9 and 27. Procedure NA at night. Rwy 23 helicopter visibility reduction below 1 SM NA. Use Indianapolis Exec altimeter setting.	
TYQ AWOS-3PT 120.725	INDIANAPOLIS APP CON 124.65 317.8	UNICOM 123.075 (CTAF) ①



ELEV 936	TDZE 932
----------	----------



Procedure NA for arrivals at CLANG on V14-192-210 southwest bound.



CATEGORY	A	B	C	D
LNAV MDA	1340-1	408 (500-1)	1340-1½ 408 (500-1½)	NA
☑ CIRCLING	1400-1 464 (500-1)	1420-1 484 (500-1)	1500-1½ 564 (600-1½)	NA

EC-2, 05 SEP 2024 to 03 OCT 2024

EC-2, 05 SEP 2024 to 03 OCT 2024