

WAAS CH 86230 W26A	APP CRS 261°	Rwy Idg TDZE Apt Elev	4601 836 836
---------------------------------	------------------------	-----------------------------	---

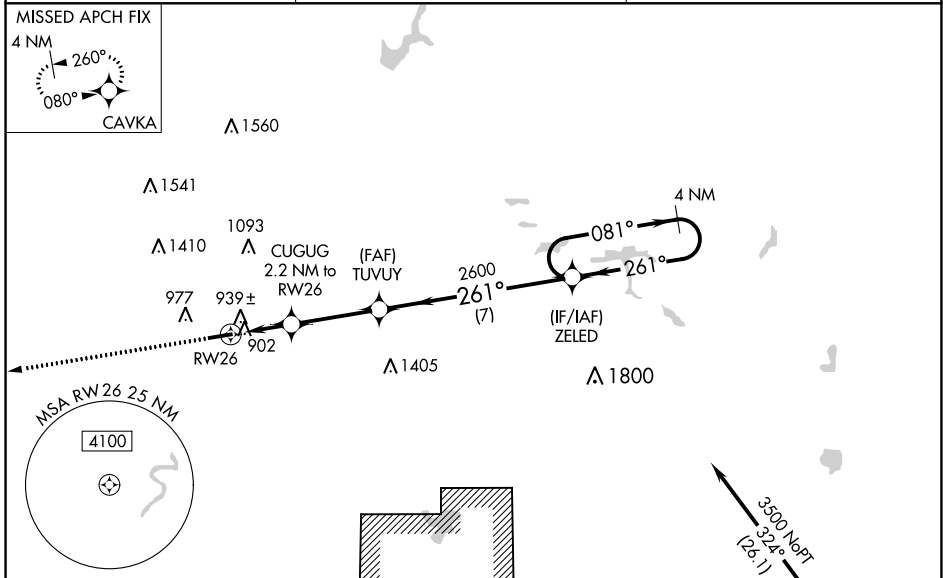
RNAV (GPS) RWY 26

BLACK RIVER FALLS AREA (BCK)

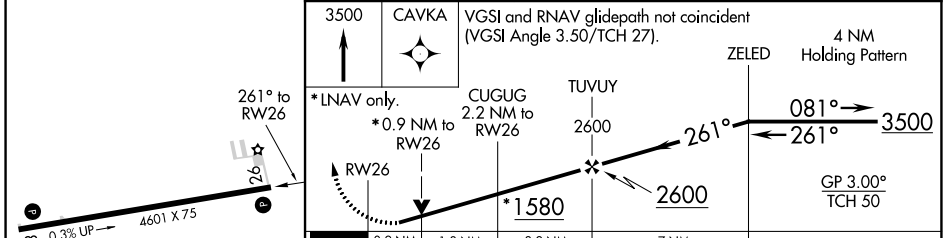
⚠ For uncompensated Baro-VNAV systems, LNAV/VNAV NA below -16°C (4°F) or above 38°C (100°F). Baro-VNAV and VDP NA when using La Crosse altimeter setting. Rwy 26 helicopter visibility reduction below 3/4 SM NA. DME/DME RNP-0.3 NA. When local altimeter setting not received, use La Crosse altimeter setting: increase LPV DA to 1178 feet and visibility all Cats 1/8 SM; increase LNAV/VNAV DA to 1211 feet and visibility all Cats 1/4 SM; increase all MDA 100 feet and visibility LNAV Cat C and D 3/8 SM and Circling Cat C 1/4 SM.

MISSED APPROACH: Climb to 3500 direct CAVKA and hold.

AWOS-3PT 119.125	MINNEAPOLIS CENTER 128.6 363.0	CTAF 122.9
----------------------------	--	----------------------



ELEV	836	TDZE	836
------	-----	------	-----



CATEGORY	A	B	C	D
LPV DA		1087-1	251 (300-1)	
LNAV/VNAV DA		1120-1	284 (300-1)	
LNAV MDA		1200-1	364 (400-1)	
CIRCLING	1280-1	1380-1	1520-2	1760-3
	444 (500-1)	544 (600-1)	684 (700-2)	924 (1000-3)

EC-3, 05 SEP 2024 to 03 OCT 2024

EC-3, 05 SEP 2024 to 03 OCT 2024