

WAAS CH 78428 W08A	APP CRS 080°	Rwy Idg TDZE Apt Elev	4601 831 836
--	------------------------	-----------------------------	---

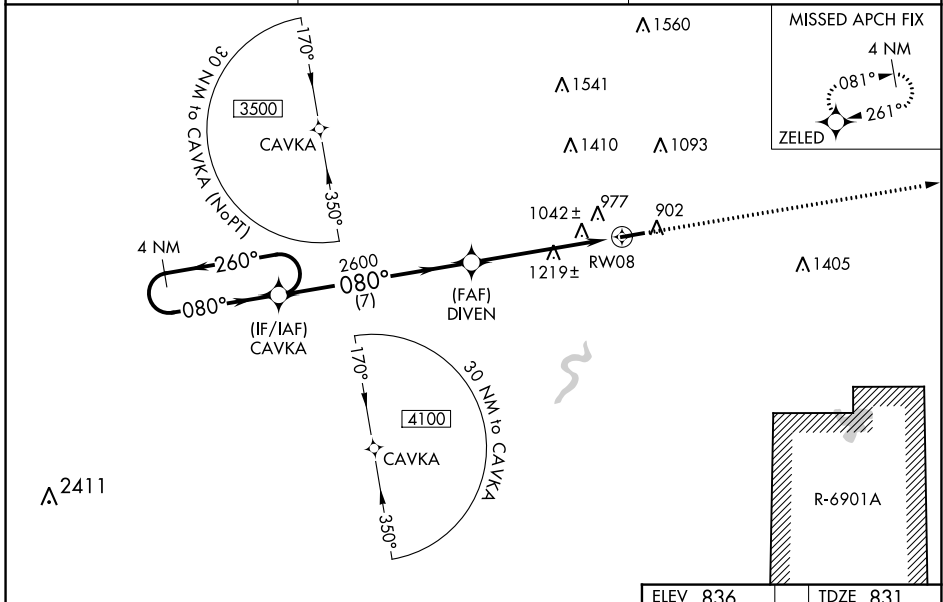
RNAV (GPS) RWY 8

BLACK RIVER FALLS AREA (BCK)

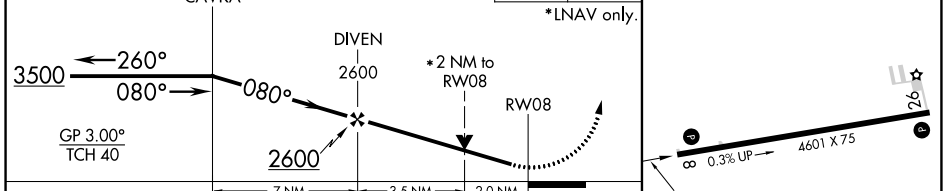
⚠ Baro-VNAV NA when using La Crosse altimeter setting. For uncompensated Baro-VNAV systems, LNAV/VNAV NA below -16°C (4°F) or above 38° C (100°F). DME/DME RNP-0.3 NA. Visibility reduction by helicopters NA. VDP NA with La Crosse altimeter setting. When local altimeter setting not received, use La Crosse altimeter setting: increase LPV DA to 1172 feet and visibility all Cats ¼ SM; increase LNAV/VNAV DA to 1441 feet and visibility all Cats ½ SM; increase all MDA 100 feet and visibility LNAV Cat B ¼ SM, Cat C and D ½ SM and Circling Cat C ¼ SM.

MISSED APPROACH:
Climb to 3500 direct ZELED and hold.

AWOS-3PT 119.125	MINNEAPOLIS CENTER 128.6 363.0	CTAF 122.9
----------------------------	--	----------------------



4 NM Holding Pattern
VGS1 and RNAV glidepath not coincident (VGS1 Angle 3.00/TCH 27).
3500 ZELED
*LNAV only.



CATEGORY	A	B	C	D
LPV DA	1081-7/8		250 (300-7/8)	
LNAV/VNAV DA	1350-13/4		519 (600-13/4)	
LNAV MDA	1480-1	649 (700-1)	1480-17/8	649 (700-17/8)
CIRCLING	1480-1	644 (700-1)	1520-2 684 (700-2)	1760-3 924 (1000-3)

REIL Rwy 8 and 26
MIRL Rwy 8-26

EC-3, 05 SEP 2024 to 03 OCT 2024

EC-3, 05 SEP 2024 to 03 OCT 2024