

WAAS CH 69340 W225A	APP CRS 251°	Rwy Idg TDZE 1254 Apt Elev 1255	3504
---	------------------------	---	-------------

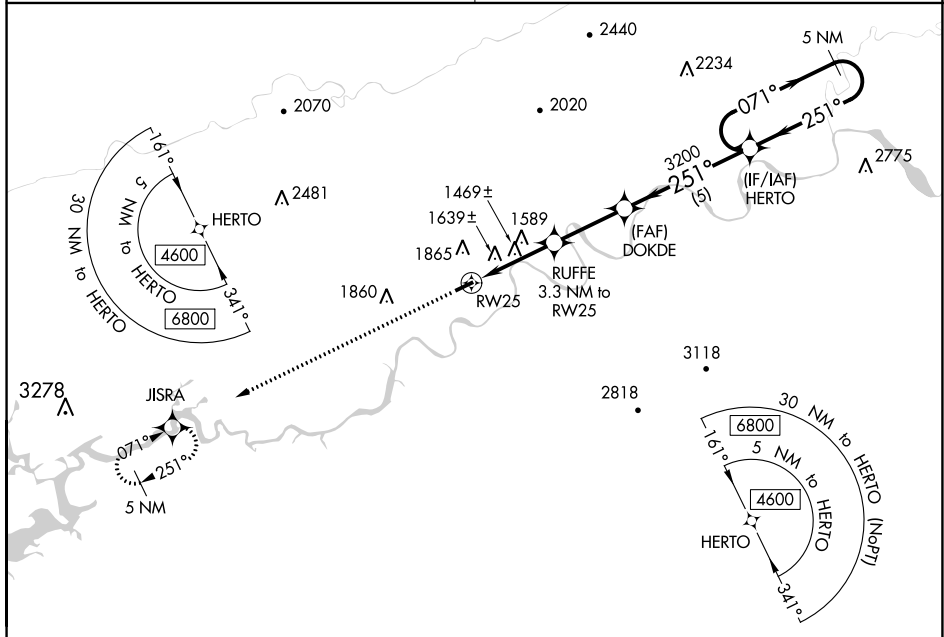
RNAV (GPS) RWY 25

HAWKINS COUNTY (RVN)

NA DME/DME RNP-0.3 NA. Procedure NA at night. Obtain local altimeter setting on CTAF; when not received, use Tri-Cities altimeter setting and increase all MDA 120 feet, increase LP Cat C visibility $\frac{3}{8}$ SM, LNAV Cat B visibility $\frac{1}{4}$ SM, Cat C visibility $\frac{3}{8}$ SM, and increase Circling Cat B visibility $\frac{1}{4}$ SM. Rwy 7, 25 helicopter visibility reduction below 1 SM NA.

MISSED APPROACH:
Climb to 4300 direct JISRA and hold.

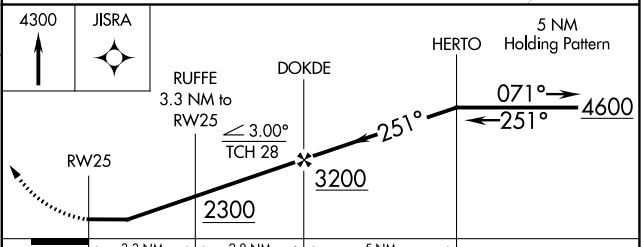
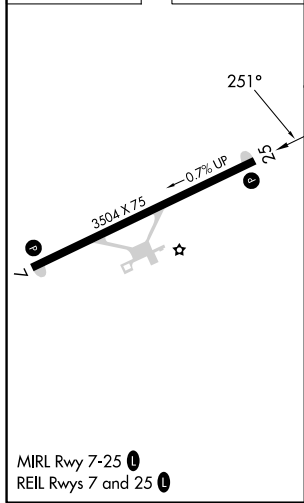
TRI CITY APP CON ★ 128.05 317.5	UNICOM 122.8 (CTAF) 0
---	---------------------------------



SE-1, 05 SEP 2024 to 03 OCT 2024

SE-1, 05 SEP 2024 to 03 OCT 2024

ELEV 1255	TDZE 1254
-----------	-----------



CATEGORY	A	B	C	D
LP MDA	1720-1	466 (500-1)	1720-1 $\frac{3}{8}$ 466 (500-1 $\frac{3}{8}$)	NA
LNAV MDA	1900-1	646 (700-1)	1900-1 $\frac{7}{8}$ 646 (700-1 $\frac{7}{8}$)	NA
C CIRCLING	2180-1 $\frac{1}{4}$	925 (1000-1 $\frac{1}{4}$)	2320-3 1065 (1100-3)	NA