

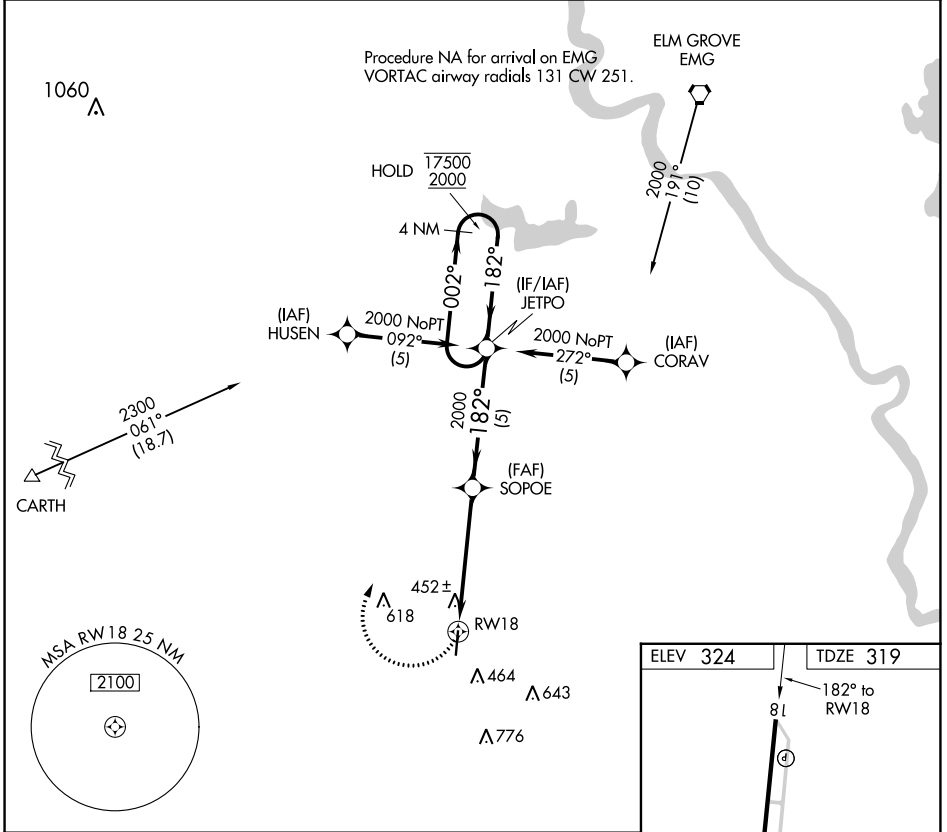
APP CRS 182°	Rwy Idg TDZE Apt Elev	5005 319 324
------------------------	-----------------------------	---

RNAV (GPS) RWY 18

C E 'RUSTY' WILLIAMS (3F'3)

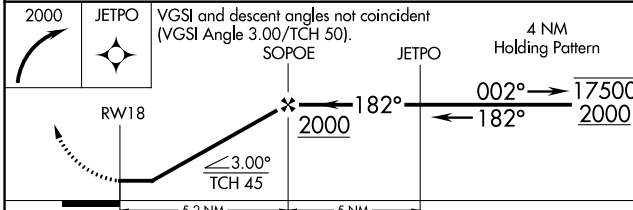
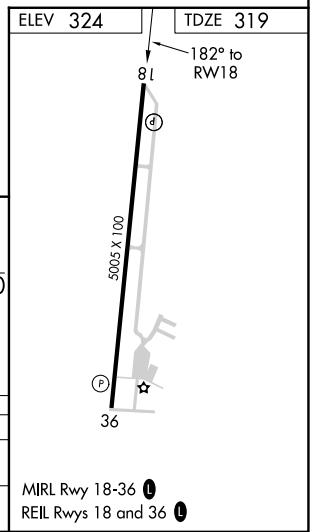
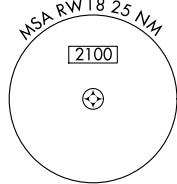
RNP APCH	<p>Procedure NA at night. Rwy 18 helicopter visibility reduction below 1 SM NA. When local altimeter setting not received, use Shreveport Rgnl altimeter setting: increase Circling Cat C MDA 80 feet and visibility 1/2 SM.</p>	MISSED APPROACH: Climbing right turn to 2000 direct JETPO and hold.
----------	--	---

AWOS-3PT 119.125	SHREVEPORT APP CON ★ 119.9 335.55	UNICOM 122.8 (CTAF) 0
----------------------------	---	---------------------------------



SC-4, 05 SEP 2024 to 03 OCT 2024

SC-4, 05 SEP 2024 to 03 OCT 2024



CATEGORY	A	B	C	D
LNVA MDA	780-1	461 (500-1)	780-1¼ 461 (500-1¼)	NA
CIRCLING	880-1	556 (600-1)	920-1½ 596 (600-1½)	NA