

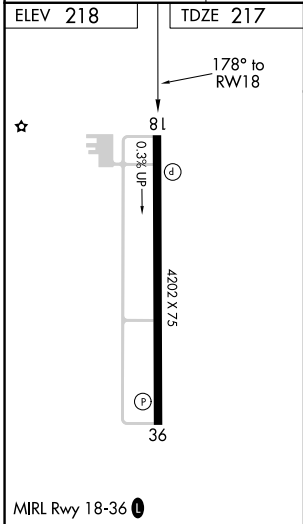
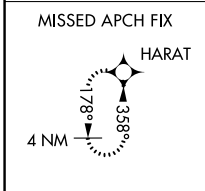
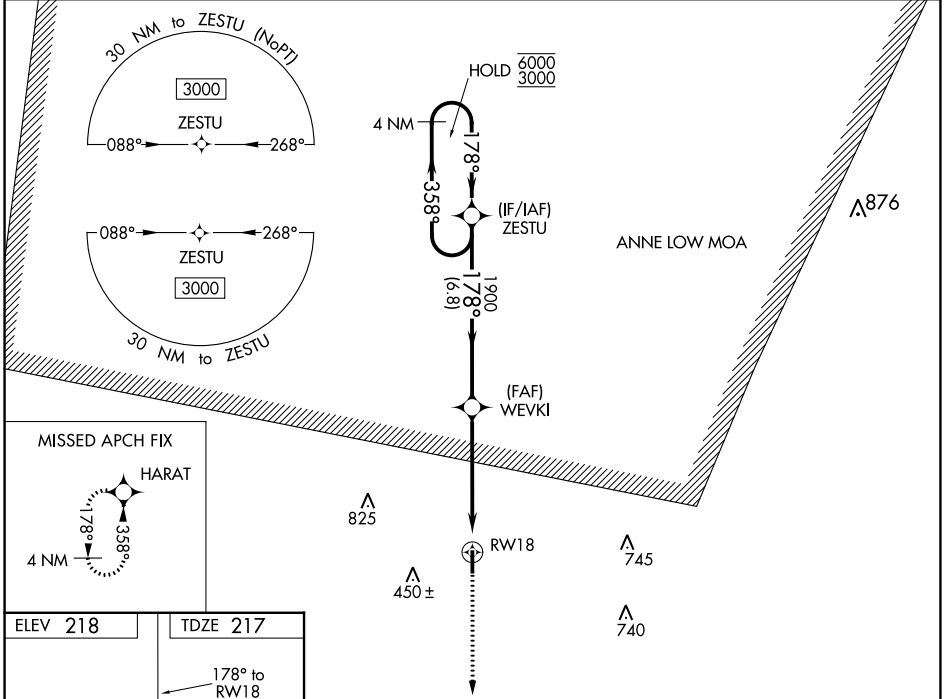
WAAS CH 86541 W18A	APP CRS 178°	Rwy Idg TDZE Apt Elev	4202 217 218
--	------------------------	-----------------------------	---

RNAV (GPS) RWY 18

SPRINGHILL (SPH)

RNP APCH.	<p>▽ Rwy 18 helicopter visibility reduction below 3/4 SM NA. For uncompensated Baro-VNAV systems, procedure NA below -15°C or above 54°C.</p>	<p>MISSED APPROACH: Climb to 3000 direct HARAT and hold.</p>
▲ NA		

SHREVEPORT APP CON 123.75 360.725	UNICOM 122.8 (CTAF) 0
---	---------------------------------



4 NM Holding Pattern	ZESTU	WEVKI	3000	HARAT
6000 ← 358°	178° →	178°	1900	*1.4 NM to RWY 18
GP 3.00°	TCH 49'	1900		*LNAV only.
	6.8 NM	3.8 NM	1.4 NM	
CATEGORY	A	B	C	D
LPV DA	498-7/8	281 (300-7/8)		NA
LNAV/VNAV DA	496-7/8	279 (300-7/8)		NA
LNAV MDA	700-1	483 (500-1)	700-1 3/8 483 (500-1 3/8)	NA
☑ CIRCLING	700-1	482 (500-1)	820-1 1/2 602 (700-1 1/2)	NA