

WAAS CH <b>61024</b> <b>W36A</b>	APP CRS <b>358°</b>	Rwy Idg TDZE Apt Elev	<b>4202</b> <b>218</b> <b>218</b>
--	------------------------	-----------------------------	---

# RNAV (GPS) RWY 36

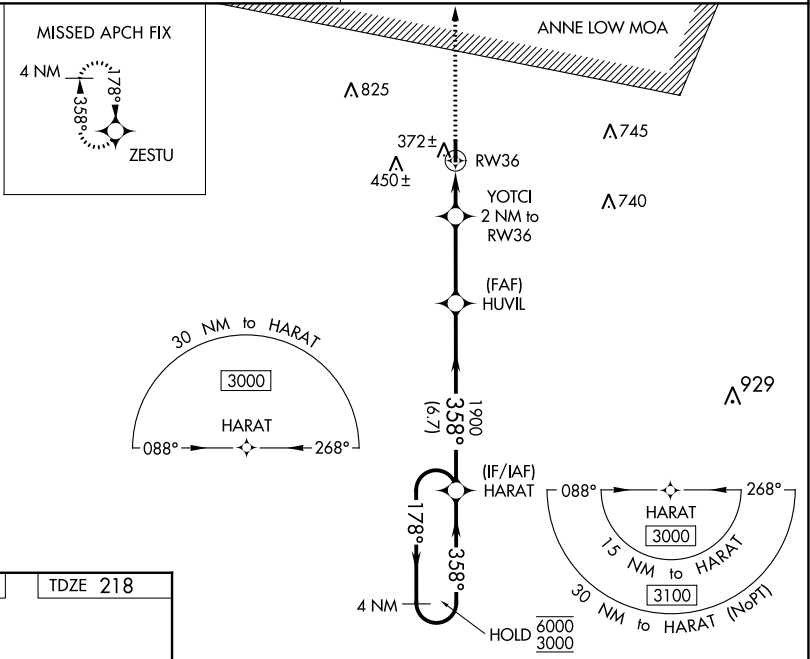
SPRINGHILL (SPH)

RNP APCH.

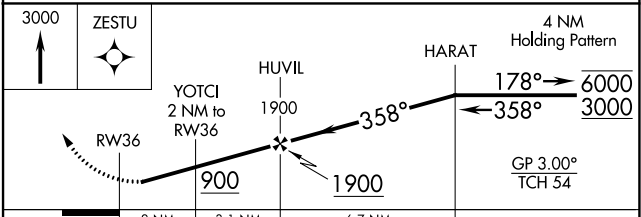
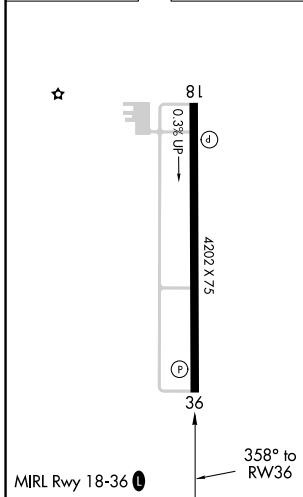
**NA** Rwy 36 helicopter visibility reduction below 3/4 SM NA.  
For uncompensated Baro-VNAV systems, procedure NA below -15°C or above 54°C.

MISSED APPROACH:  
Climb to 3000 direct ZESTU and hold.

SHREVEPORT APP CON <b>123.75 360.725</b>	UNICOM <b>122.8 (CTAF) 0</b>
---	---------------------------------



ELEV 218	TDZE 218
----------	----------



CATEGORY	A	B	C	D
LPV DA	545-1	327 (400-1)		NA
LNAV/VNAV DA	638-1 1/8	420 (500-1 1/8)		NA
LNAV MDA	640-1	422 (500-1)	640-1 1/4 422 (500-1 1/4)	NA
<b>CIRCLING</b>	700-1	482 (500-1)	820-1 3/4 602 (700-1 3/4)	NA

SC-4, 05 SEP 2024 to 03 OCT 2024

SC-4, 05 SEP 2024 to 03 OCT 2024