

LOC/DME I-FQD 109.55 Chan 32(Y)	APP CRS 009°	Rwy Idg TDZE Apt Elev	5000 1059 1077
-----------------------------------------------------	------------------------	-----------------------------	-------------------------------------------

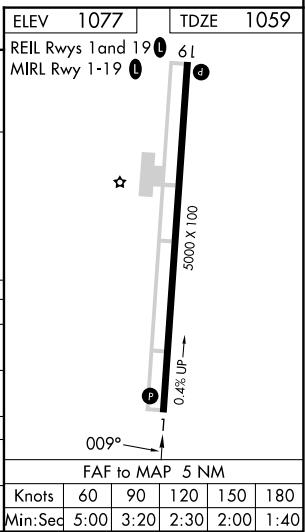
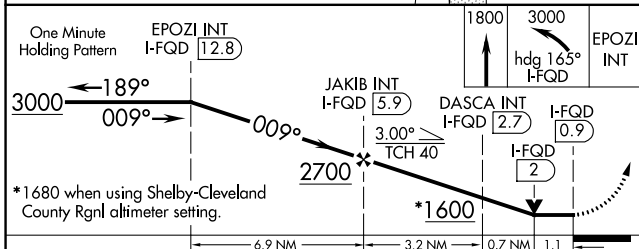
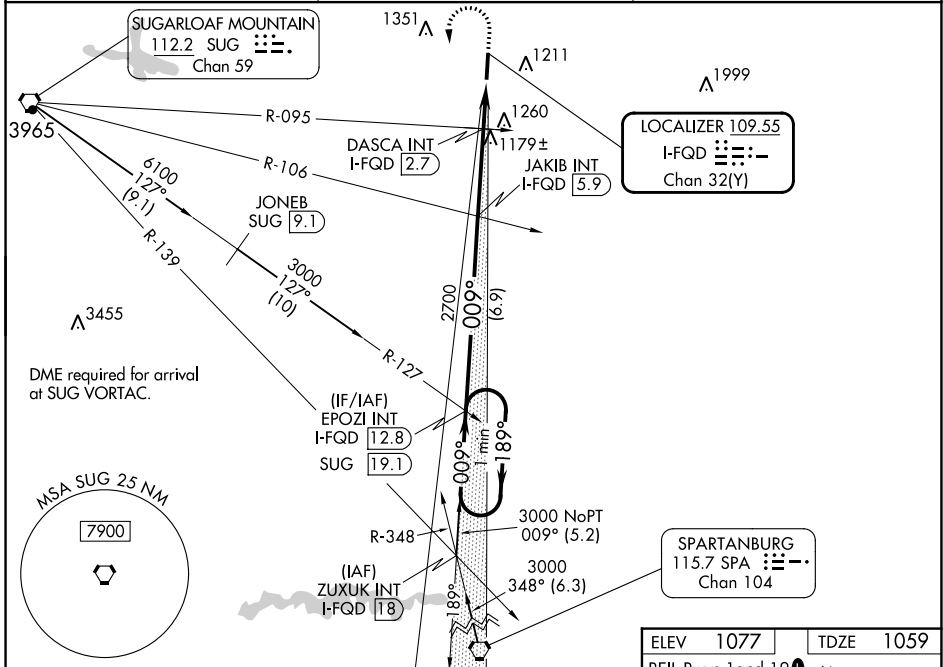
LOC RWY 1

RUTHERFORD COUNTY/MARCHMAN FLD (FQD)

VDP NA with Shelby-Cleveland County Rgnl altimeter setting. When local altimeter setting not received, use Shelby-Cleveland County Rgnl altimeter setting and increase all MDA 80 feet and S-1 Cat C and D and Circling Cat C visibilities 1/8 mile; increase Circling Cat D visibility 1/4 mile. DASCAs fix minimums: Increase S-1 Cat C and D and Circling Cat C and D visibilities 1/4 mile.

MISSED APPROACH: Climb to 1800 then climbing left turn to 3000 on heading 165° and on I-FQD localizer south course to EPOZI INT/I-FQD 12.8 DME and hold.

AWOS-3 118.275	GREER APP CON ★ 119.4 350.2	UNICOM 122.8 (CTAF) 0
--------------------------	---------------------------------------	---------------------------------



CATEGORY	A	B	C	D
S-1	1600-1	541 (600-1)	1600-1½	541 (600-1½)
C CIRCLING	1600-1 523 (600-1)	1620-1 543 (600-1)	1640-1½ 563 (600-1½)	1820-2½ 743 (800-2½)
DASCAs FIX MINIMUMS (DUAL VOR RECEIVERS OR DME REQUIRED)				
S-1	1440-1	381 (400-1)	1440-1½	381 (400-1½)
C CIRCLING	1560-1 483 (500-1)	1620-1 543 (600-1)	1640-1½ 563 (600-1½)	1820-1½ 743 (800-1½)

LOC RWY 1

SE-2, 05 SEP 2024 to 03 OCT 2024

SE-2, 05 SEP 2024 to 03 OCT 2024