

WAAS CH <b>82335</b> W19A	APP CRS <b>189°</b>	Rwy Idg TDZE Apt Elev	<b>5000</b> <b>1077</b> <b>1077</b>
---------------------------------	------------------------	-----------------------------	---

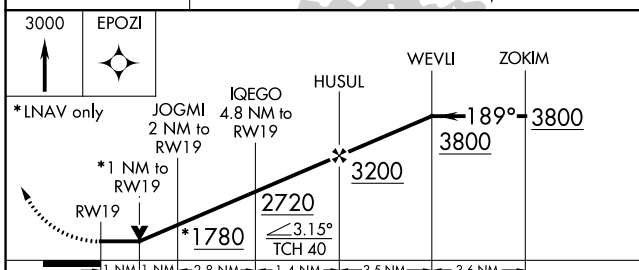
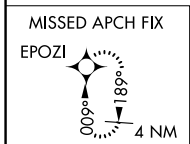
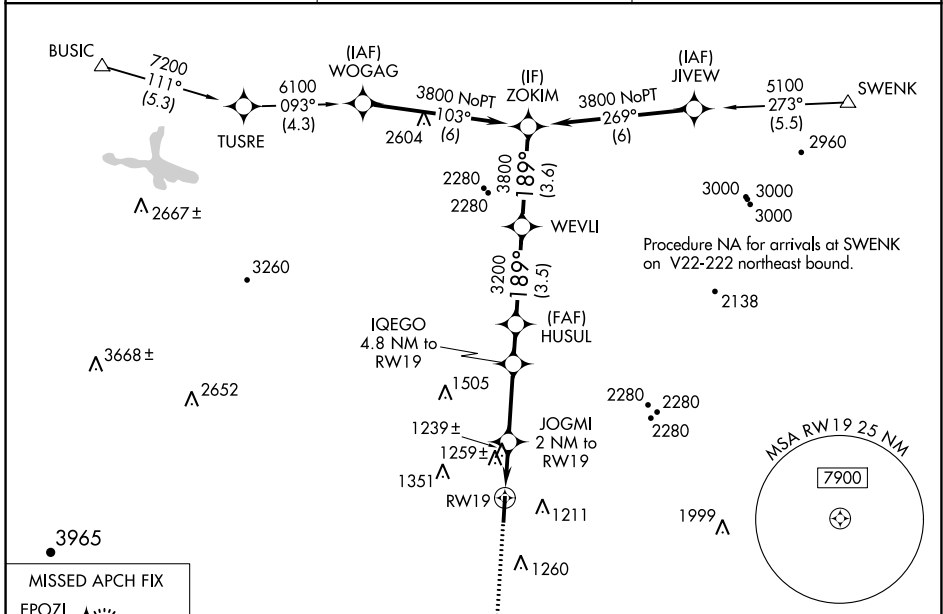
# RNAV (GPS) RWY 19

RUTHERFORD COUNTY/MARCHMAN FLD (FQD)

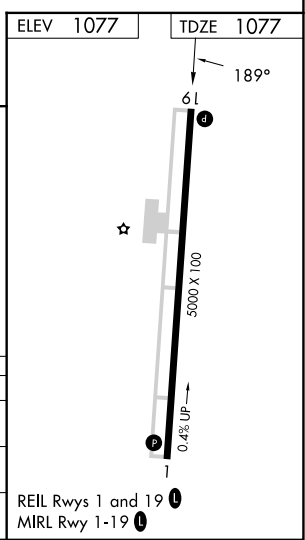
**▼** DME/DME RNP-0.3 NA. When local altimeter setting not received, use Shelby-Cleveland County Rgnl altimeter setting and increase all MDA 80 feet and increase LP and LNAV Cat C and D ½ mile, increase Circling Cat C and D visibility ¼ mile. Rwy 19 helicopter visibility reduction below ¾ mile NA.

MISSED APPROACH: Climb to 3000 direct EPOZI and hold.

AWOS-3 <b>118,275</b>	GREER APP CON ★ <b>119.4 350.2</b>	UNICOM <b>122.8 (CTAF) 0</b>
--------------------------	---------------------------------------	---------------------------------



CATEGORY	A	B	C	D
LP MDA	1500-1	423 (500-1)	1500-1¼	423 (500-1¼)
LNAV MDA	1520-1	443 (500-1)	1520-1¾	443 (500-1¾)
<b>C</b> CIRCLING	1560-1 483 (500-1)	1620-1 543 (600-1)	1640-1½ 563 (600-1½)	1820-2½ 743 (800-2½)



SE-2, 05 SEP 2024 to 03 OCT 2024

SE-2, 05 SEP 2024 to 03 OCT 2024