

WAAS CH <b>65720</b> <b>W15A</b>	APP CRS <b>152°</b>	Rwy ldg <b>5100</b> TDZE <b>58</b> Apt Elev <b>58</b>
--	------------------------	---

# RNAV (GPS) RWY 15

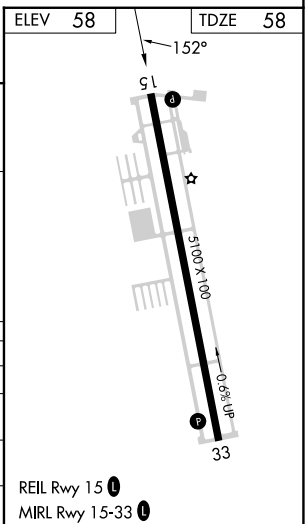
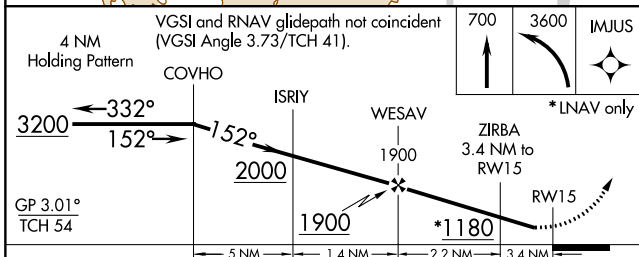
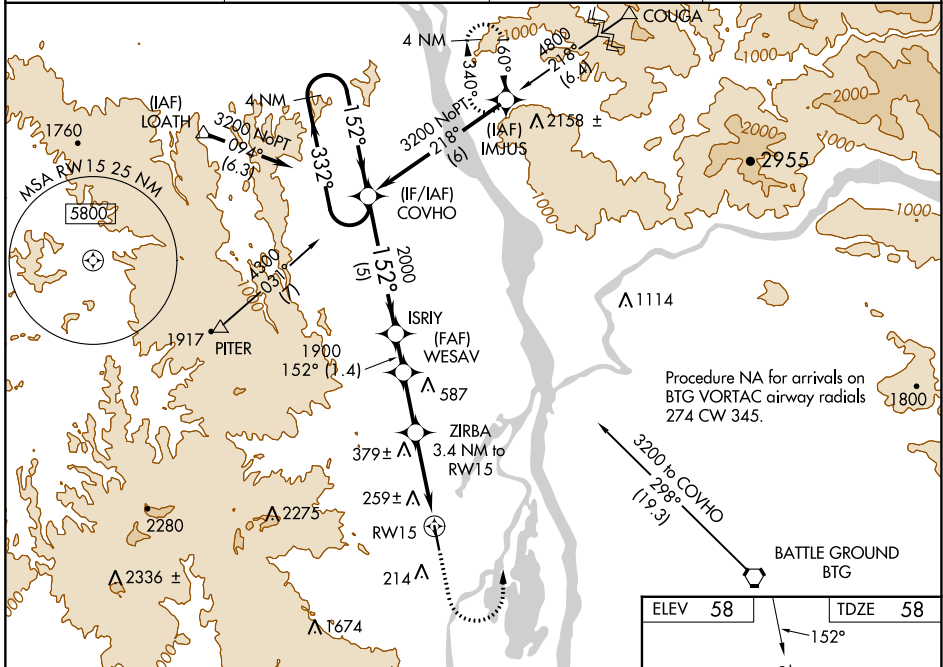
SCAPOOSE (SPB)

RNP APCH-GPS.

**⚠** Circling NA west of Rwy 15-33. Rwy 15 helicopter visibility reduction below 1 SM NA. When VGSI inop, Straight-in and Circling to Rwy 15 NA at night. When local altimeter setting not received, use Portland Intl altimeter setting; increase all DA/MDA 40 feet and increase LNAV/VNAV all Cats visibility 1/8 SM, Circling Cat D visibility 1/4 SM. For uncompensated Baro-VNAV systems, LNAV/VNAV NA below -15°C (5°F) or above 42°C (107°F).

**⚠** MISSED APPROACH: Climb to 700 then climbing left turn to 3600 direct IMJUS and hold.

ASOS <b>135.875</b>	PORTLAND APP CON <b>124.35 299.2</b>	CLNC DEL <b>121.65</b>	UNICOM <b>122.8 (CTAF) 0</b>
------------------------	---	---------------------------	---------------------------------



CATEGORY	A	B	C	D
LPV DA	350-1		292 (300-1)	
LNAV/VNAV DA	580-1 3/4		522 (600-1 3/4)	
LNAV MDA	640-1 582 (600-1)		640-1 3/4 582 (600-1 3/4)	
CIRCLING	660-1 602 (700-1)		660-1 3/4 860-2 1/2 602 (700-1 3/4) 802 (900-2 1/2)	

NW-1, 05 SEP 2024 to 03 OCT 2024

NW-1, 05 SEP 2024 to 03 OCT 2024