

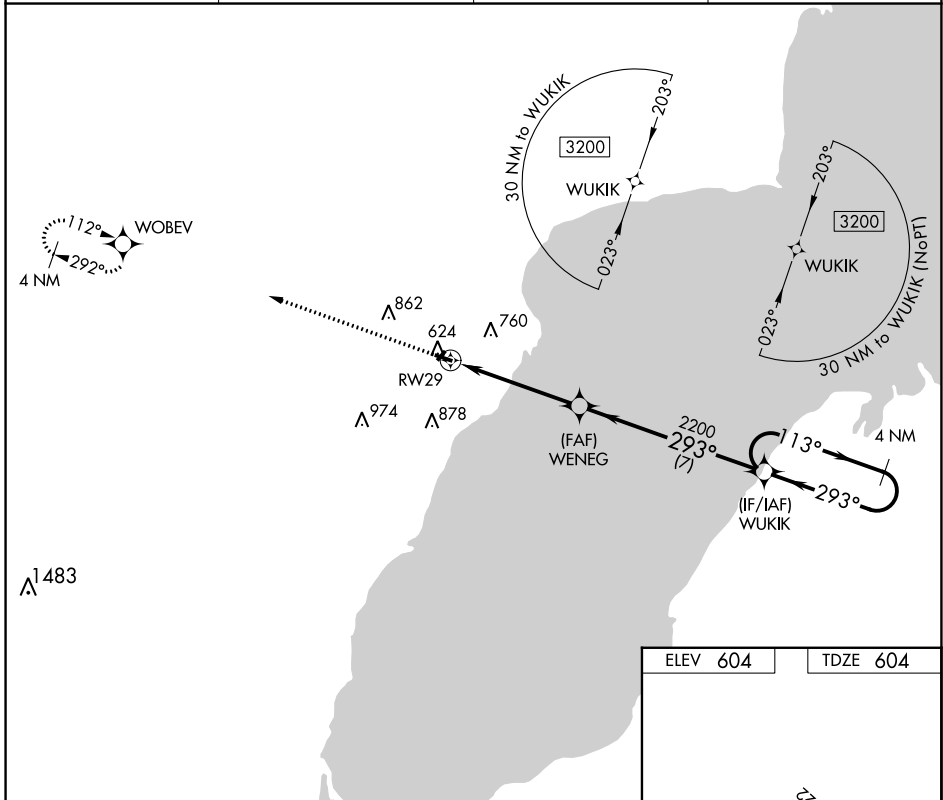
| | | |
|-------------|----------|-------------|
| APP CRS | Rwy Idg | 3198 |
| 293° | TDZE | 604 |
| | Apt Elev | 604 |

RNAV (GPS) RWY 29

OCONTO/J DOUGLAS BAKE MUNI (OCQ)

| | |
|--|---|
| RNP APCH - GPS. | MISSED APPROACH: Climb to 3200 direct WOBEV and hold. |
| <p>▼ When local altimeter setting not received, use Menominee, MI altimeter setting. Procedure NA at night. Rwy 29 helicopter visibility reduction below 3/4 SM NA. Circling NA to Rwy's 4 and 22.</p> | |

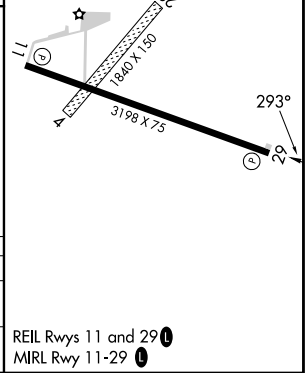
| | | | |
|--------------------------|-------------------------------|---|-------------------------------|
| AWOS-3 120.925 | MNM AWOS-3PT 121.45 | GREEN BAY APP CON ★ 120.3 338.2 | UNICOM 122.8 (CTAF) |
|--------------------------|-------------------------------|---|-------------------------------|



EC-3, 05 SEP 2024 to 03 OCT 2024

EC-3, 05 SEP 2024 to 03 OCT 2024

| | | | |
|--|-----------------------|-----------------------|-------------------------------|
| 3200 | WOBEV | WUKIK | 4 NM Holding Pattern |
| ↑ | ✧ | | |
| WENEG | | 2200 | 3200 |
| RW29 | | 293° | 113° |
| 3.00° TCH 40 | | 293° | 293° |
| 4.9 NM | | 7 NM | |
| VGSi and descent angles not coincident (VGSi Angle 4.00/TCH 31). | | | |
| CATEGORY | A | B | C |
| LNAV MDA | 1120-1 | 516 (600-1) | 1120-1 3/8 516 (600-1 3/8) |
| CIRCLING | 1120-1 516 (600-1) | 1220-1 616 (700-1) | 1260-1 3/4 656 (700-1 3/4) |
| | | | NA |



REIL Rwy's 11 and 29
MIRL Rwy 11-29