

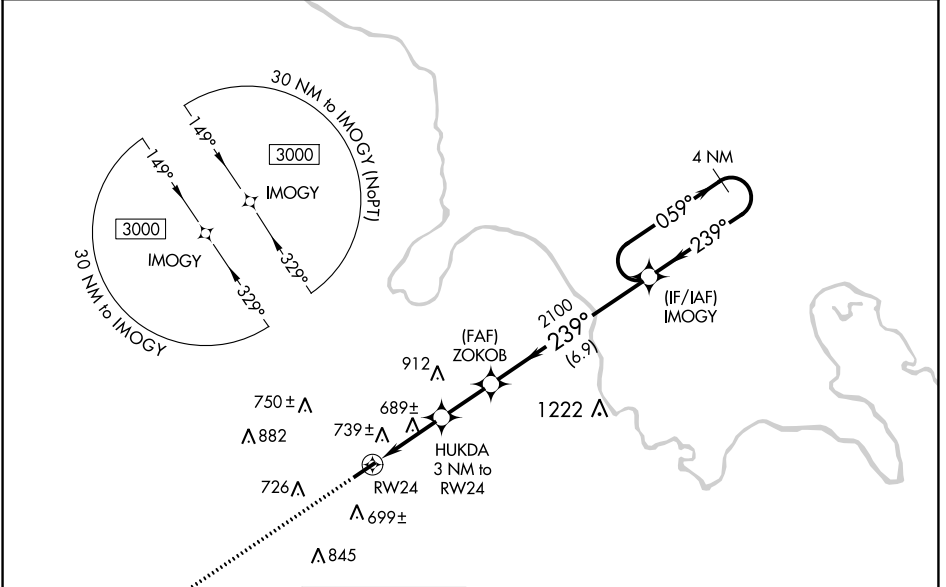
| | | |
|--|------------------------|---|
| WAAS CH 99627 W24A | APP CRS 239° | Rwy Idg 4600 TDZE 425 Apt Elev 428 |
|--|------------------------|---|

RNAV (GPS) RWY 24

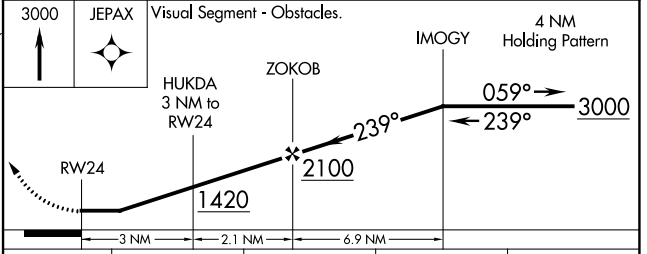
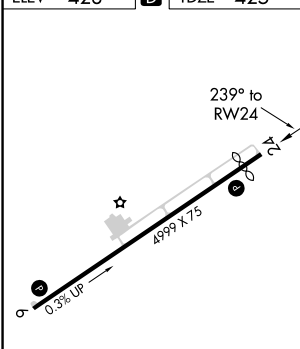
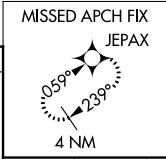
MUHLENBERG COUNTY (M21)

| | | |
|-----------------|---|--|
| RNP APCH - GPS. | When local altimeter setting not received, use Owensboro altimeter setting and increase all MDAs 80 feet. Increase LP Cats C/D visibility 3/8 SM and LNAV Cats C/D and Circling Cats C/D visibility 1/4 SM. Procedure NA at night. Rwy 24, helicopter visibility reduction below 1 SM NA. | MISSED APPROACH: Climb to 3000 direct JEPAX and hold. |
|-----------------|---|--|

| | | |
|-------------------------|--|---------------------------------|
| AWOS-3 120.45 | CAMPBELL APP CON ★ 118.1 269.525 | UNICOM 123.0 (CTAF) 0 |
|-------------------------|--|---------------------------------|



| | | |
|----------|----------|----------|
| ELEV 428 | D | TDZE 425 |
|----------|----------|----------|



| CATEGORY | A | B | C | D |
|-------------------|-----------------------|-----------------------|--|--|
| LP MDA | 940-1 | 515 (600-1) | 940-1 ³ / ₈ | 515 (600-1 ³ / ₈) |
| LNAV MDA | 1000-1 | 575 (600-1) | 1000-1 ⁵ / ₈ | 575 (600-1 ⁵ / ₈) |
| C CIRCLING | 1040-1 612 (700-1) | 1100-1 672 (700-1) | 1180-2 ¹ / ₄ 752 (800-2 ¹ / ₄) | 1200-2 ¹ / ₂ 772 (800-2 ¹ / ₂) |

MIRL Rwy 6-24 **0**
REIL Rwy 6 and 24 **0**

GREENVILLE, KENTUCKY
Amdt 1E 11AUG22

37°14'N-87°09'W

RNAV (GPS) RWY 24

SE-1, 05 SEP 2024 to 03 OCT 2024

SE-1, 05 SEP 2024 to 03 OCT 2024