

CLARKSVILLE, TENNESSEE

# COPTER RNAV (GPS) Y RWY 5

|          |            |      |
|----------|------------|------|
| APCH CRS | Rwy ldg    | 5000 |
| 047°     | TDZE       | 595  |
|          | Arprt Elev | 595  |

AL-6373 [USA]

SABRE AAF (FORT CAMPBELL) (KEOD)

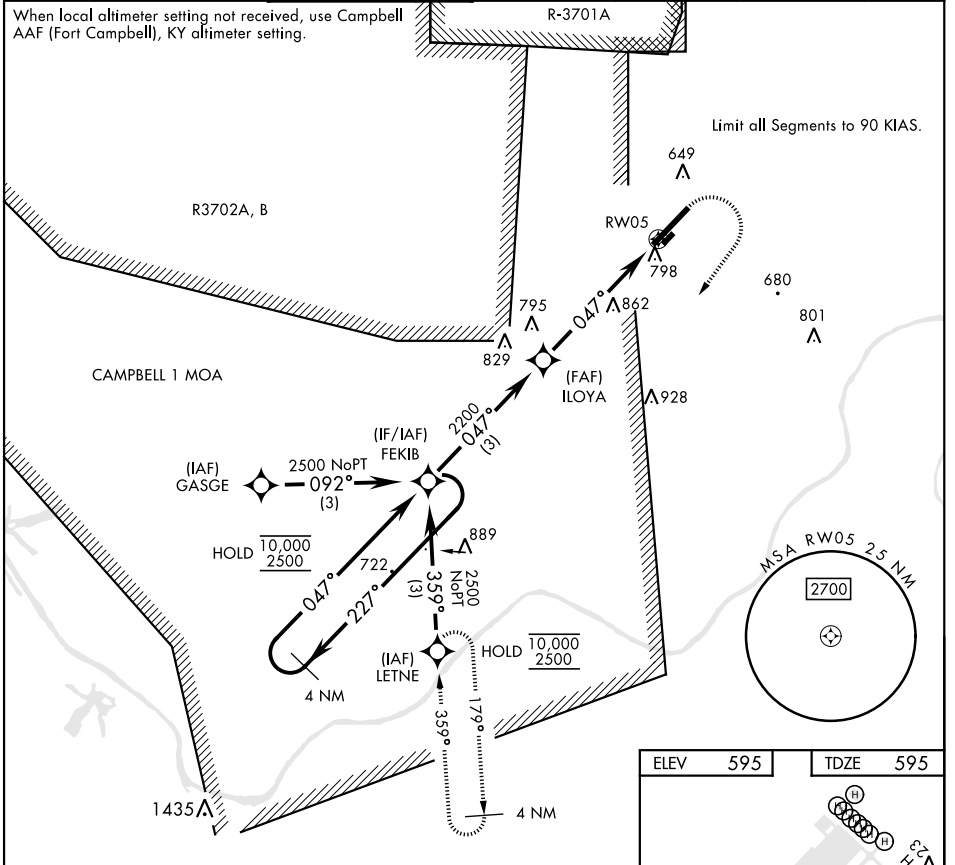
RNP APCH - GPS

RADAR required

MISSED APPROACH: Climbing right turn to 2500 direct LETNE and hold.

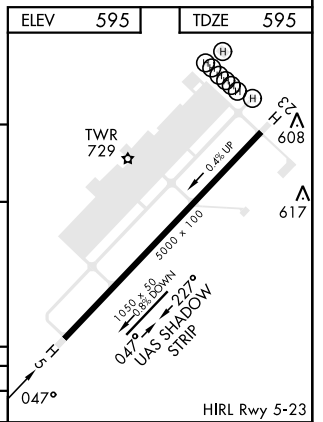
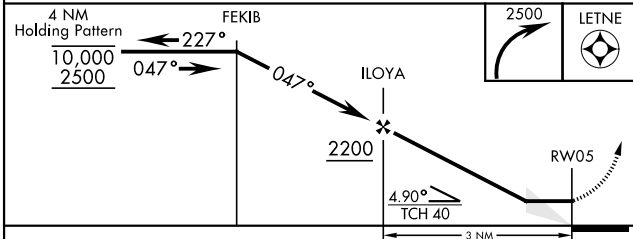
|       |                  |                       |               |          |             |     |
|-------|------------------|-----------------------|---------------|----------|-------------|-----|
| ATIS  | CAMPBELL APP CON | TOWER ★               | GND CON       | CLNC DEL | EAGLE RADIO | ASR |
| 306.5 | 134.35 307.025   | 124.675 (CTAF) 290.45 | 142.975 267.3 | 237.6    | 285.7       |     |

When local altimeter setting not received, use Campbell AAF (Fort Campbell), KY altimeter setting.



SE-1, 05 SEP 2024 to 03 OCT 2024

SE-1, 05 SEP 2024 to 03 OCT 2024



|          |        |     |         |
|----------|--------|-----|---------|
| CATEGORY | COPTER |     |         |
| LNAV MDA | 1180-1 | 585 | (600-1) |

CLARKSVILLE, TENNESSEE

36°34'N-87°29'W

SABRE AAF (FORT CAMPBELL) (KEOD)

Amdt 3 07SEP23

# COPTER RNAV (GPS) Y RWY 5