

BORRN SIX DEPARTURE (RNAV)

SC-5, 05 SEP 2024 to 03 OCT 2024

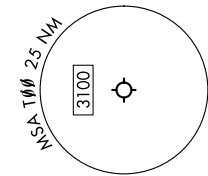
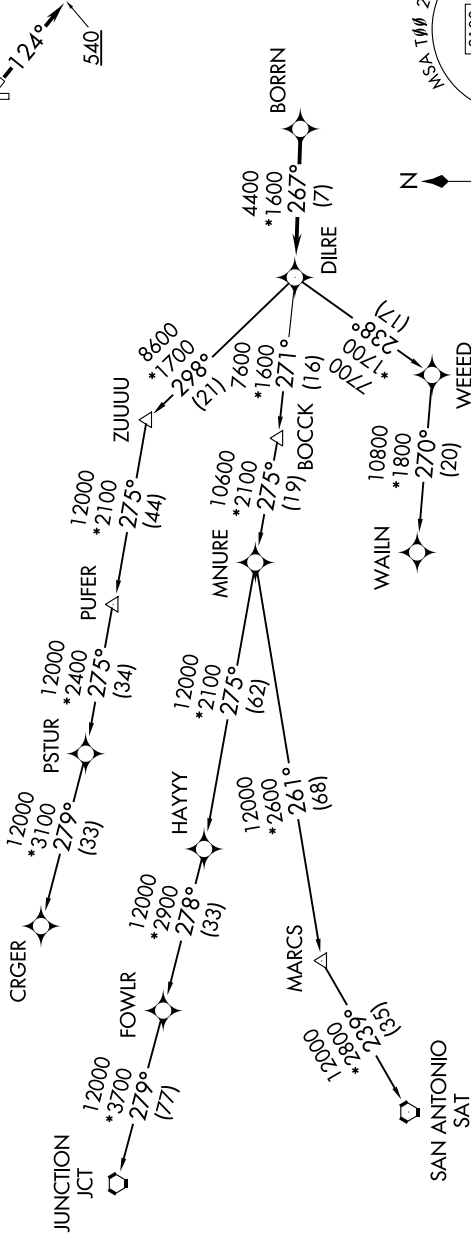
CTAF  
122.9  
HOUSTON DEP CON  
134.45 284.0

TAKEOFF MINIMUMS

Rwys 17, 35: NA - Environmental.  
Rwys 12, 30: Standard with minimum  
climb of 500'/NM to 540.

RNAV 1 - DME/DME/IRU or GPS.  
RADAR required.

TOP ALTITUDE:  
ASSIGNED BY ATC



NOTE: Chart not to scale.

NOTE: CRGR-TRANSITION ATC assigned only  
for aircraft departing 54T, AXH, EFD, GLS,  
HPY, IWS, LBX, LVJ, SGR, TME, T00, T41.

(NARRATIVE ON FOLLOWING PAGE)

BORRN SIX DEPARTURE (RNAV)

SC-5, 05 SEP 2024 to 03 OCT 2024