

(EKR4.EKR) 24137

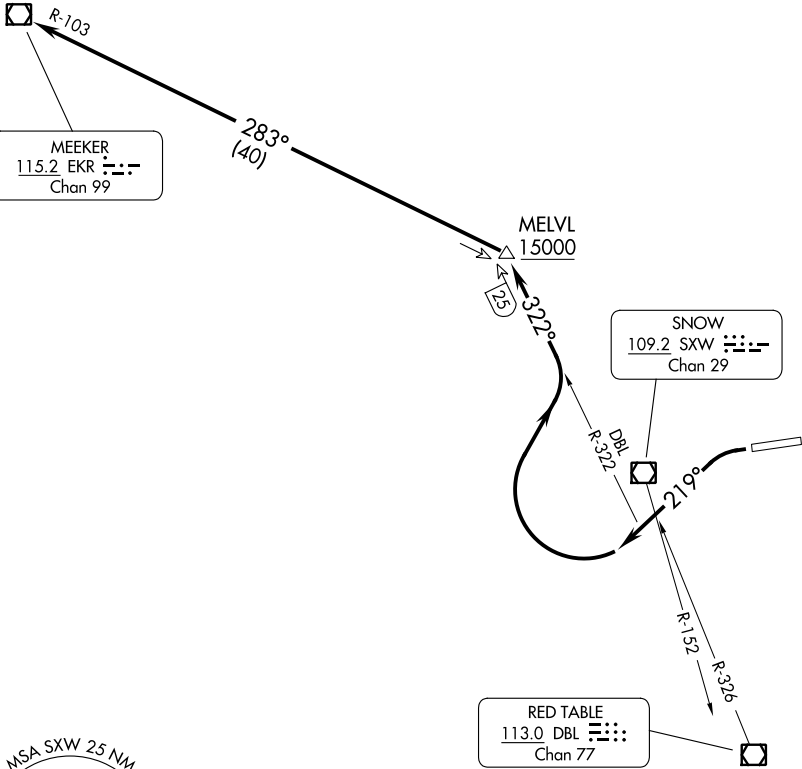
MEEKER FOUR DEPARTURE

AL-6403 (FAA)

EAGLE COUNTY RGNL (E⁴G⁴E)
EAGLE, COLORADO

TOP ALTITUDE:
15000

DENVER CENTER
128.65 282.2



SW-1, 05 SEP 2024 to 03 OCT 2024

SW-1, 05 SEP 2024 to 03 OCT 2024

TAKEOFF MINIMUMS

Rwy 25: Standard with minimum climb of 815'/NM to 15000.

NOTE: Chart not to scale.



DEPARTURE ROUTE DESCRIPTION

TAKEOFF RUNWAY 25: Climbing left turn heading 219°, upon crossing SXW R-152 or DBL R-326 turn right on DBL R-322 to MELVL INT/DBL 25 DME then turn left on EKR R-103 to EKR VOR/DME. Cross MELVL at or above 15000, expect filed altitude 10 minutes after departure.

MEEKER FOUR DEPARTURE

(EKR4.EKR) 16MAY24

EAGLE, COLORADO
EAGLE COUNTY RGNL (E⁴G⁴E)