

WAAS CH <b>78131</b> <b>W16A</b>	APP CRS <b>164°</b>	Rwy Idg TDZE <b>1206</b> Apt Elev <b>1206</b>
--	------------------------	---

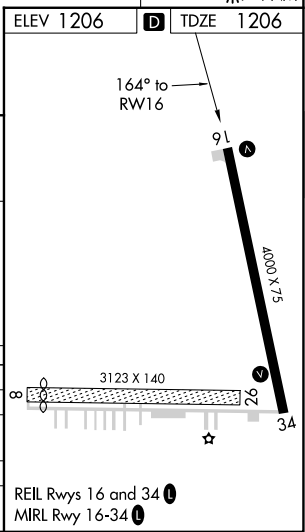
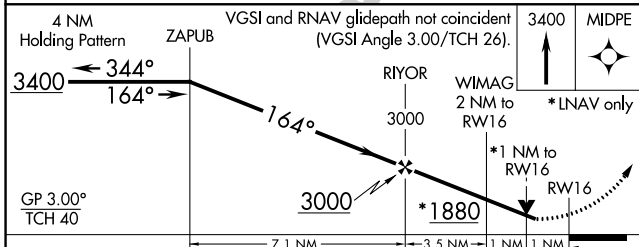
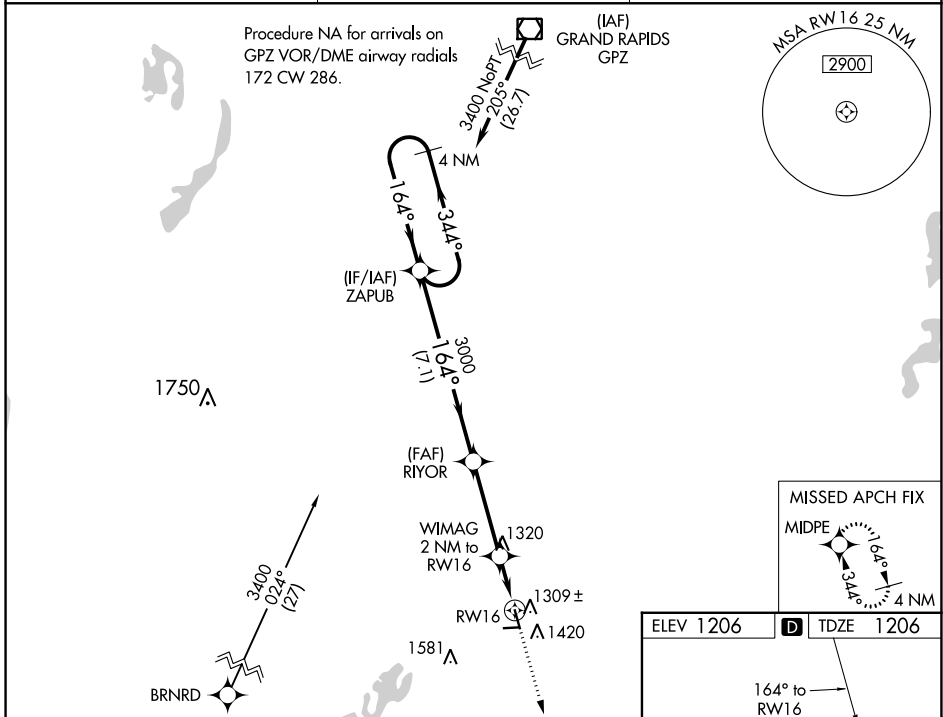
# RNAV (GPS) RWY 16

AITKIN MUNI/STEVE KURTZ FLD (AIT)

**⚠** For uncompensated Baro-VNAV systems, LNAV/VNAV NA below -17°C (2°F) or above 54°C (130°F).  
**⚠** Baro-VNAV and VDP NA when using Mc Gregor altimeter setting. DME/DME RNP-0.3 NA. When local altimeter setting not received; use Mc Gregor altimeter setting and increase all DA and MDA 40 feet; increase LPV all Cats visibilities ¼ SM, LNAV/VNAV all Cats and LNAV Cat C visibilities ½ SM. Circling NA to Rwys 8 and 26. Rwy 16 helicopter visibility reduction below ¾ SM NA.

MISSED APPROACH: Climb to 3400 direct MIDPE and hold.

AWOS-3 <b>118.675</b>	MINNEAPOLIS CENTER <b>118.05 239.0</b>	UNICOM <b>123.05 (CTAF) 0</b>
--------------------------	---	----------------------------------



CATEGORY	A	B	C	D
LPV DA	1518-1	312 (400-1)		NA
LNAV/VNAV DA	1607-1 ¾	401 (500-1 ¾)		NA
LNAV MDA	1560-1	354 (400-1)		NA
CIRCLING	1780-1	574 (600-1)	1900-2 694 (700-2)	NA

NC-1, 05 SEP 2024 to 03 OCT 2024

NC-1, 05 SEP 2024 to 03 OCT 2024