

WAAS CH <b>82431</b> <b>W34A</b>	APP CRS <b>344°</b>	Rwy Idg TDZE Apt Elev	<b>4000</b> <b>1206</b> <b>1206</b>
--	------------------------	-----------------------------	---

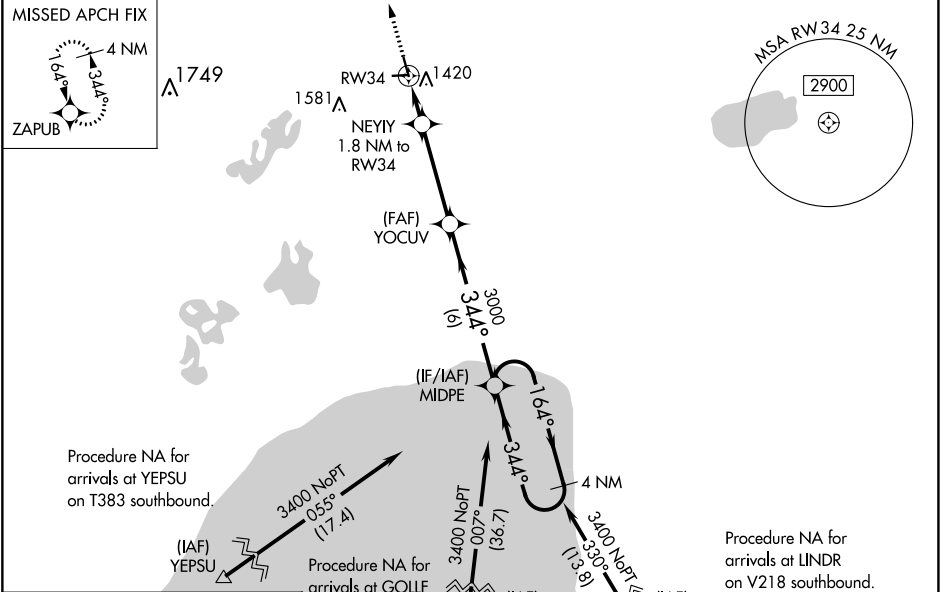
# RNAV (GPS) RWY 34

AITKIN MUNI/STEVE KURTZ FLD (AIT)

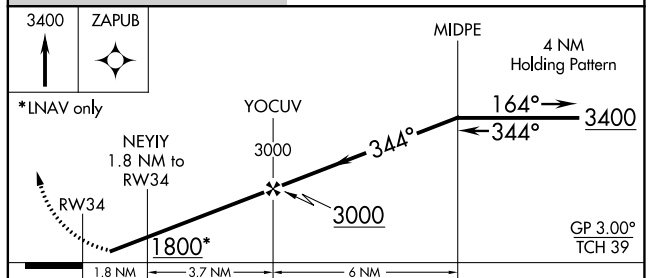
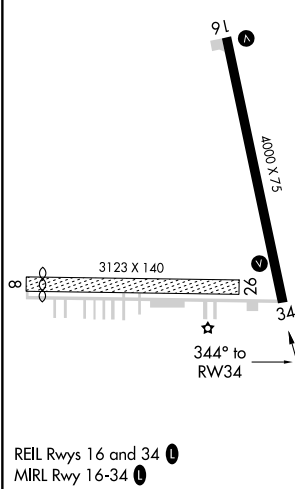
**⚠** Baro-VNAV NA when using Mc Gregor altimeter setting. For uncompensated Baro-VNAV systems, LNAV/VNAV NA below -17°C (2°F) or above 54°C (130°F). DME/DME RNP-0.3 NA. When local altimeter setting not received; use Mc Gregor altimeter setting and increase all DA 40 feet and all visibilities ¼ SM, increase all MDA 40 feet and LNAV Cat C visibility ¼ SM. Circling NA to Rwy 8 and 26. Rwy 34 helicopter visibility reduction below ¾ SM NA.

**MISSED APPROACH:**  
Climb to 3400 direct ZAPUB and hold.

AWOS-3 <b>118.675</b>	MINNEAPOLIS CENTER <b>118.05 239.0</b>	UNICOM <b>123.05 (CTAF) 0</b>
--------------------------	---	----------------------------------



ELEV 1206	<b>D</b>	TDZE 1206
-----------	----------	-----------



CATEGORY	A	B	C	D
LPV DA	1548-1½	342 (400-1½)		NA
LNAV/VNAV DA	1620-1¾	414 (500-1½)		NA
LNAV MDA	1720-1	514 (600-1)	1720-1¾ 514 (600-1½)	NA
<b>C</b> CIRCLING	1780-1	574 (600-1)	1900-2 694 (700-2)	NA