

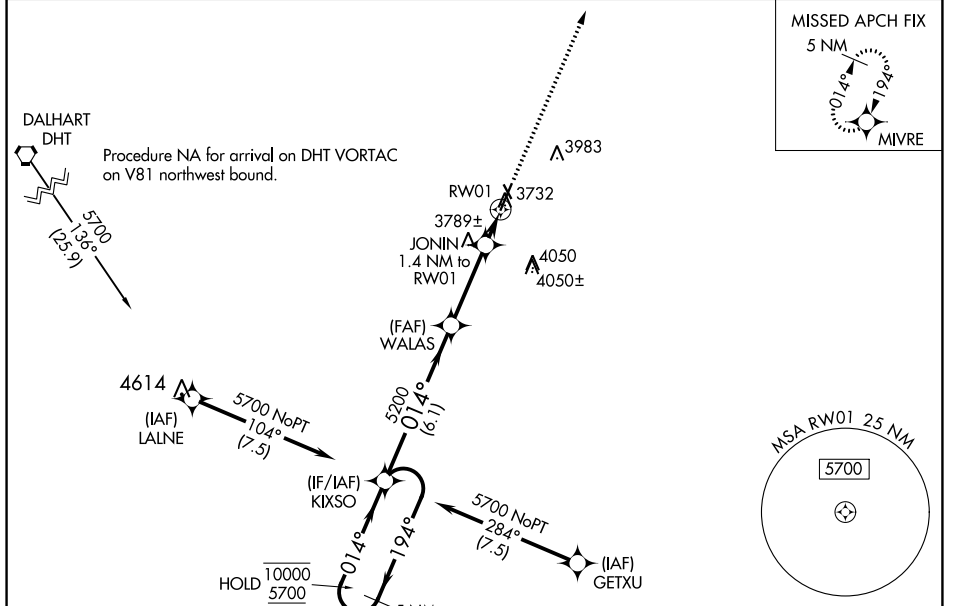
APP CRS	Rwy Idg	6001
014°	TDZE	3706
	Apt Elev	3706

RNAV (GPS) RWY 1

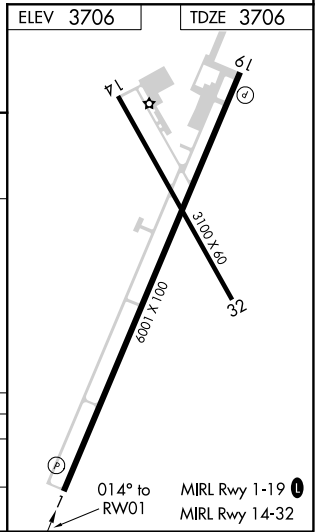
MOORE COUNTY (DUX)

RNP APCH - GPS.		MISSED APPROACH: Climb to 5700 direct MIVRE and hold.
Circling Rwy 14, 32 NA at night.		

AWOS-3 118.075	ALBUQUERQUE CENTER 127.85 285.475	UNICOM 122.8 (CTAF) 0
--------------------------	---	---------------------------------



5 NM Holding Pattern		KIXSO		WALAS		JONIN 1.4 NM to RW01		RW01	
10000	← 194°	→ 014°	014°	5200	4200	3.00°	TCH 50	0.9 NM to RW01	5700 MIVRE
5700									
CATEGORY		A	B	C	D				
LNAV MDA		4040-1				334 (400-1)			
CIRCLING		4100-1 394 (400-1)	4300-1 594 (600-1)	4400-2 694 (700-2)	4400-2¼ 694 (700-2¼)				



SC-2, 05 SEP 2024 to 03 OCT 2024

SC-2, 05 SEP 2024 to 03 OCT 2024