

| | | |
|-------------|----------|-------------|
| APP CRS | Rwy Idg | 6001 |
| 194° | TDZE | 3701 |
| | Apt Elev | 3706 |

RNAV (GPS) RWY 19

MOORE COUNTY (DUX)

RNP APCH - GPS.

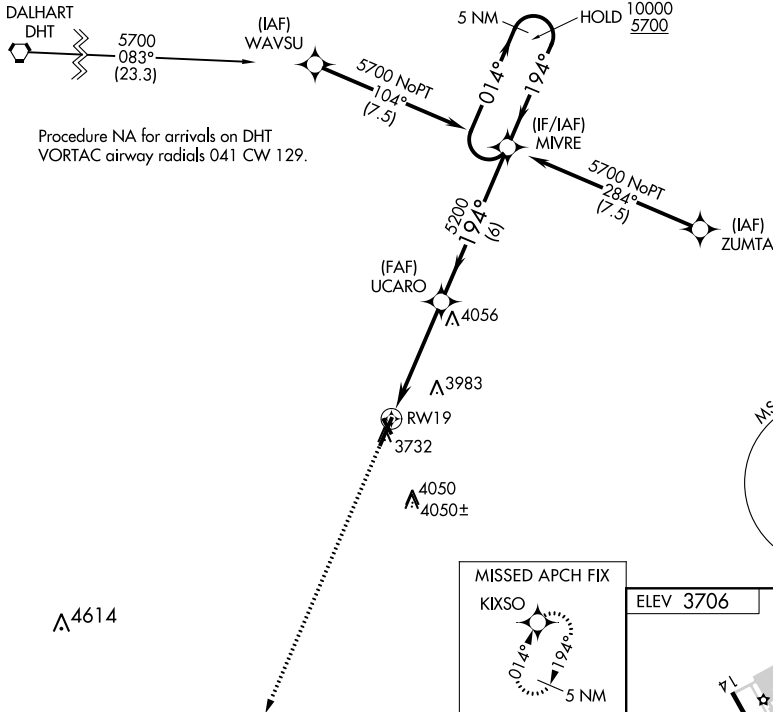
▼ Circling Rwy 14, 32 NA at night.
▲ Rwy 19 helicopter visibility reduction below 3/4 SM NA.

MISSED APPROACH: Climb to 5700 direct KIXSO and hold.

AWOS-3
118.075

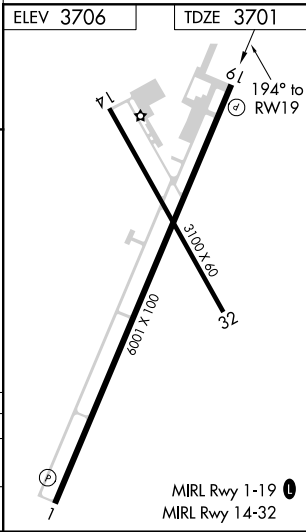
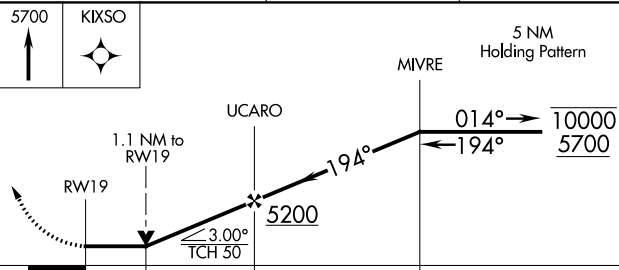
ALBUQUERQUE CENTER
127.85 285.475

UNICOM
122.8 (CTAF) 0



SC-2, 05 SEP 2024 to 03 OCT 2024

SC-2, 05 SEP 2024 to 03 OCT 2024



| CATEGORY | A | B | C | D |
|-------------------|-----------------------|-----------------------|-----------------------|-------------------------------|
| LNVA MDA | 4100-1 | 399 (400-1) | 4100-1 1/8 | 399 (400-1 1/8) |
| C CIRCLING | 4100-1 394 (400-1) | 4300-1 594 (600-1) | 4400-2 694 (700-2) | 4400-2 1/4 694 (700-2 1/4) |