

WAAS CH 53428 W14A	APP CRS 140°	Rwy Idg 4301 TDZE 1692 Apt Elev 1692
--	------------------------	---

RNAV (GPS) RWY 14

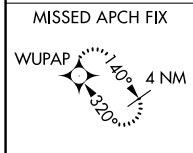
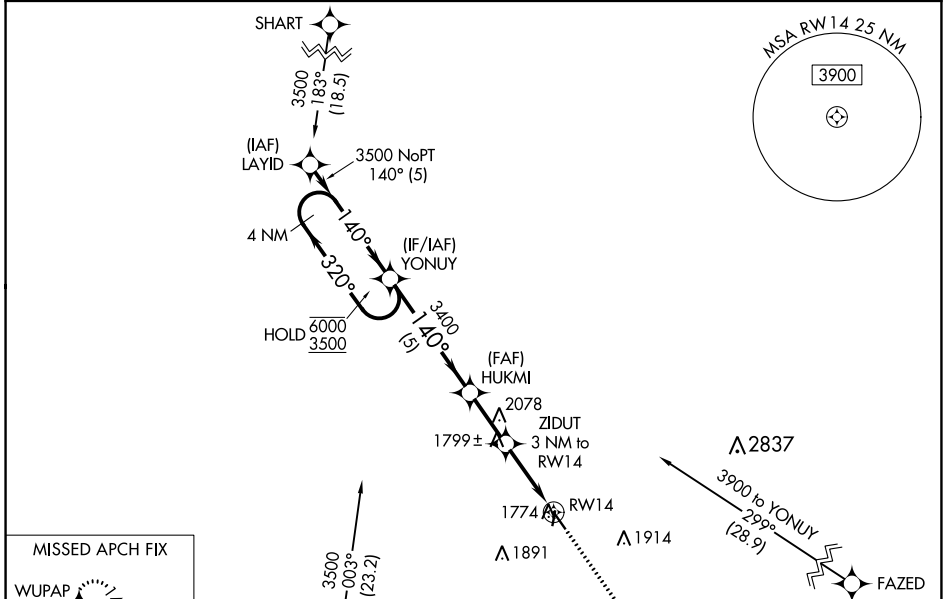
SUPERIOR MUNI (12K)

RNP APCH - GPS.

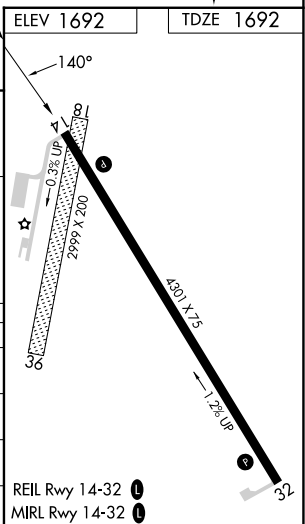
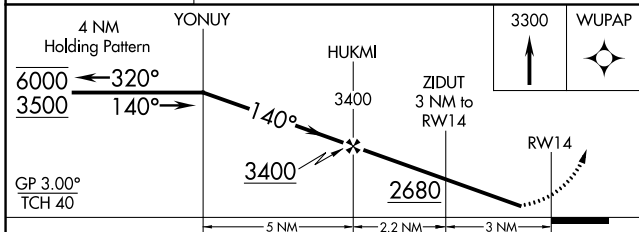
⚠ Rwy 14 helicopter visibility reduction below 3/4 SM NA. Circling Rwy 18, 36 NA at night. Baro-VNAV NA. Use Hebron altimeter setting, when not received, use Hastings altimeter setting; increase LPV and LNAV/VNAV DA to 2072 feet; increase all MDAs 60 feet and Circling visibility Cat C 1/4 SM.

MISSED APPROACH: Climb to 3300 direct WUPAP and hold.

HJH AWOS-3 118.525	MINNEAPOLIS CENTER 119.4 278.8	UNICOM 123.0 (CTAF) 0
------------------------------	--	---------------------------------



ELEV 1692	TDZE 1692
-----------	-----------



CATEGORY	A	B	C	D
LPV DA	2026-1 334 (400-1)			NA
LNAV/VNAV DA	2026-1 334 (400-1)			NA
LNAV MDA	2140-1 448 (500-1)		2140-1 3/8 448 (500-1 3/8)	NA
CIRCLING	2360-1 668 (700-1)		2360-1 3/4 668 (700-1 3/4)	NA

REIL Rwy 14-32 0
MIRL Rwy 14-32 0

NC-2, 05 SEP 2024 to 03 OCT 2024

NC-2, 05 SEP 2024 to 03 OCT 2024