

KARR SEVEN DEPARTURE (RNAV)

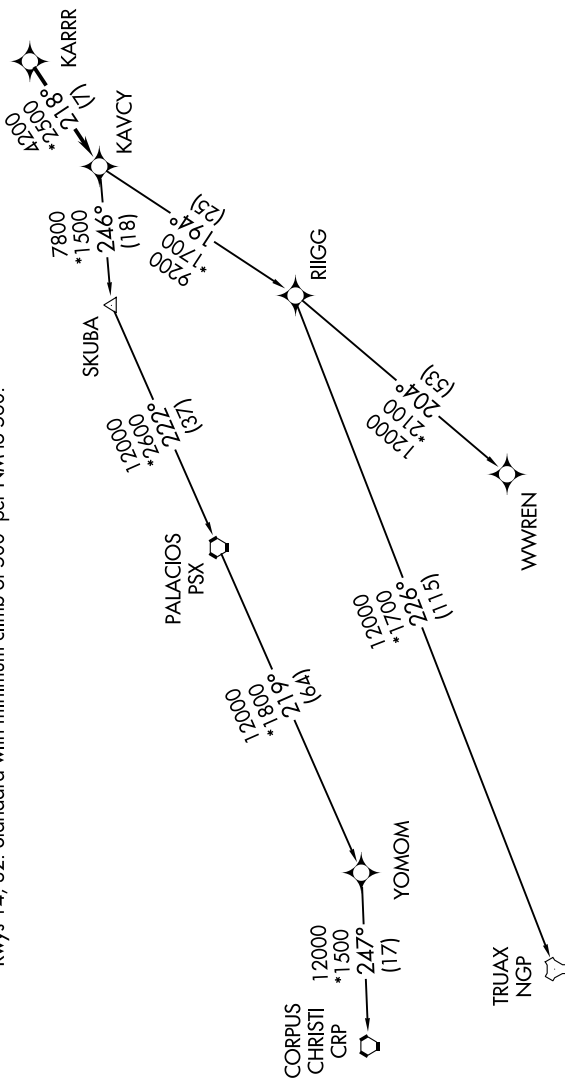
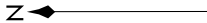
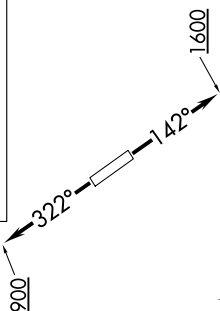
SC-5, 05 SEP 2024 to 03 OCT 2024

RNAV-1 DME/DME/IRU or GPS.
RADAR required.

ASOS
118.525
CTAF
122.725
CINC DEL
124.0
HOUSTON DEP CON
134.45 284.0

TAKEOFF MINIMUMS
Rwys 14, 32: Standard with minimum climb of 500' per NM to 560.

**TOP ALTITUDE:
ASSIGNED BY ATC**



(NARRATIVE ON FOLLOWING PAGE)

NOTE: Chart not to scale.

SC-5, 05 SEP 2024 to 03 OCT 2024